

Charging Contacts

for AGVs, Shuttles and more

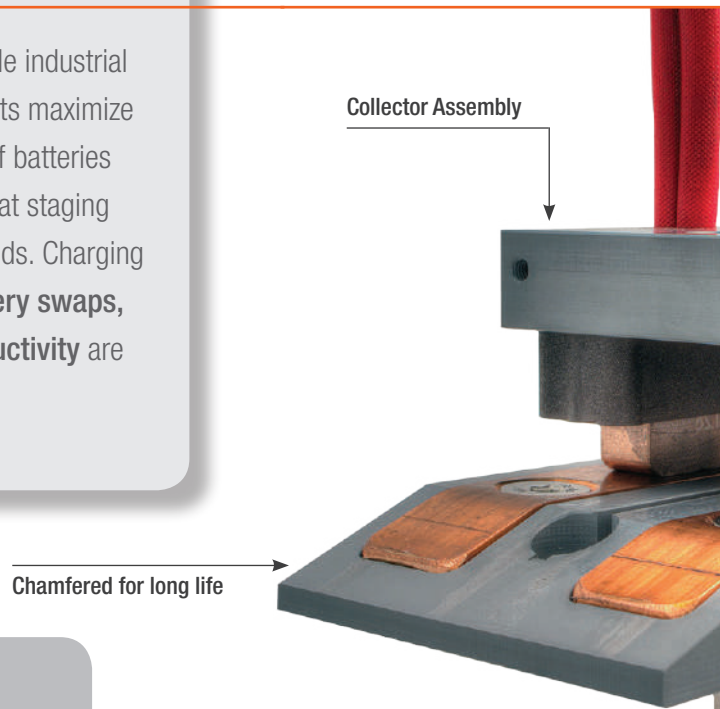


CONDUCTIX
wampfler

Summary

Conductix-Wampfler brings our extensive knowledge of mobile industrial electrification to **Charging Contact** solutions. Charging Contacts maximize operational time by taking advantage of opportunity charging of batteries or capacitors any time equipment is stationary. This can occur at staging areas, workstations, loading/unloading stations, and turn arounds. Charging contacts **eliminate the need for manual or automated battery swaps, as well as manual plug in charging. Profitability and productivity** are optimized.

Features

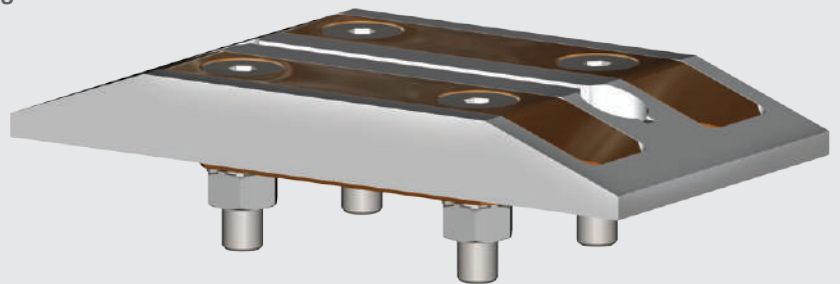


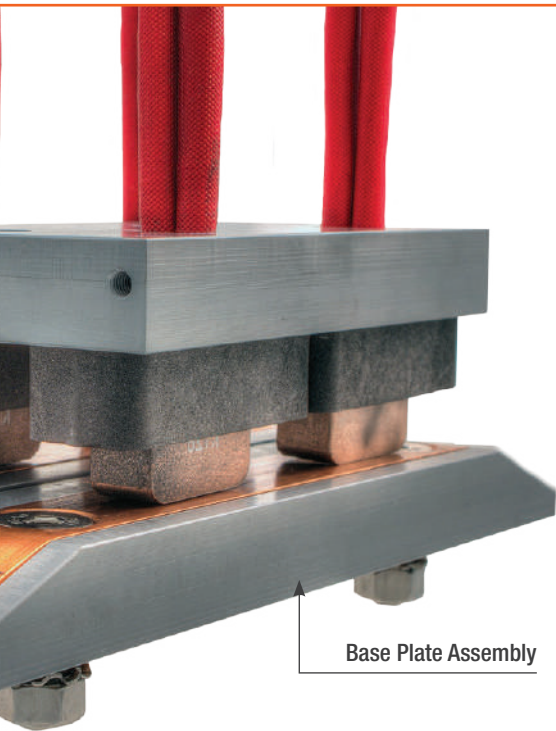
Long Life

Our **Charging Contacts** are designed for long life. The chamfered design on the base plate ensures that our brush only contacts the copper contact when engaging and disengaging from the base plate. This design ensures that plastic base plate material is not worn and deposited on the base charging contact. This allows us to maintain consistent engagement of the collector and the base plate contact ensuring charging integrity. Our unique design allows for problem free operation of the charging contacts.

Markets & Applications

- Manufacturing and Production Facilities
- Warehouse and Packaging Facilities
- Battery Charging in Automobile Production
- AGVS
- Shuttles
- Amusement Rides
- Service Robots
- Custom Engineered Configurations



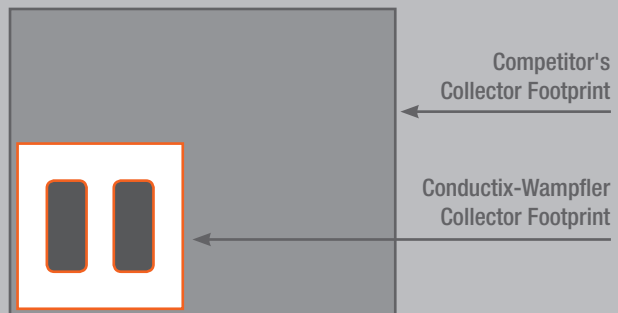


Base Plate Assembly

Compact & Modular

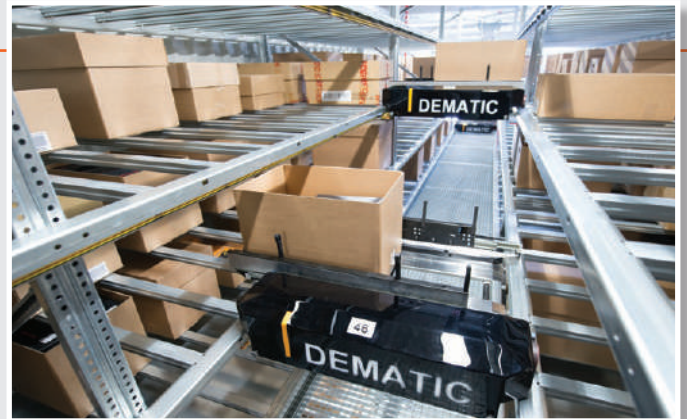
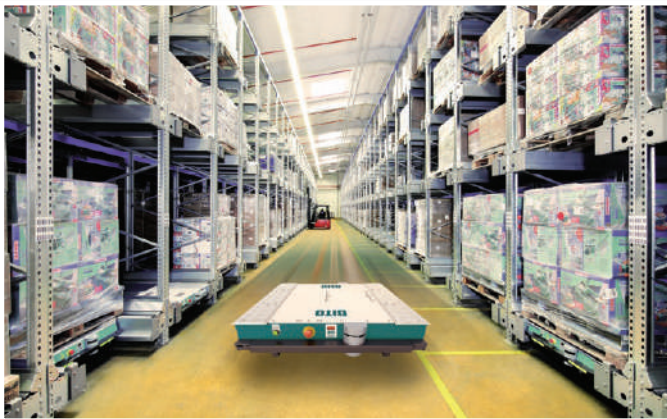
The charging contacts have a smaller footprint by up to 75% for the collector and up to 66% on the base plate compared to other systems. We understand that space is at a premium in many applications, so we designed the charging contacts with these needs in mind. The modular design of our components allows for design flexibility in conductor placement to meet your electrical charging needs.

Compact Footprint



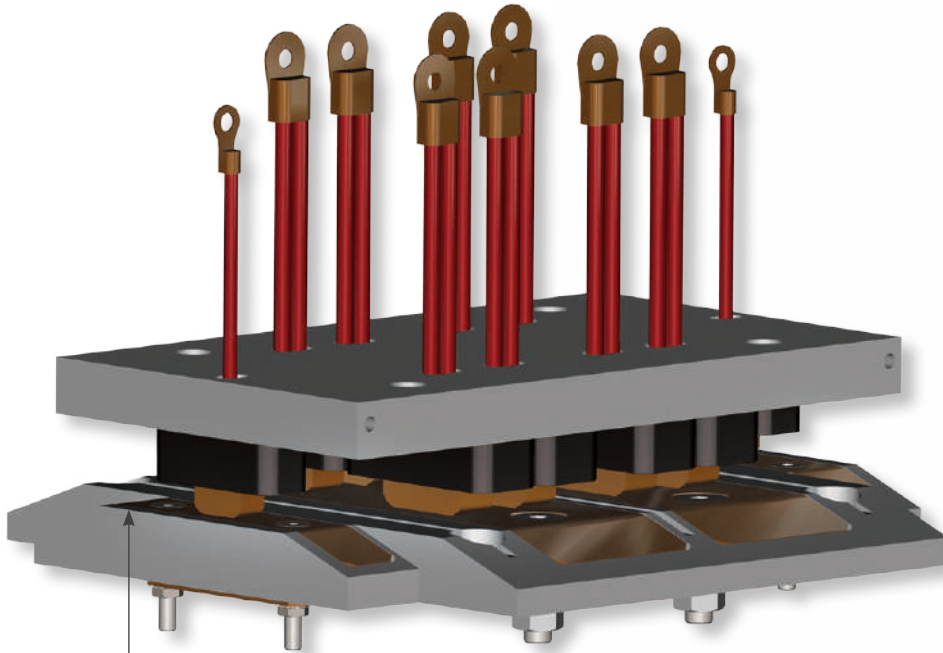
Exceptional Value

Our **Charging Contacts** were designed for exceptional performance at an exceptional price with your needs in mind.

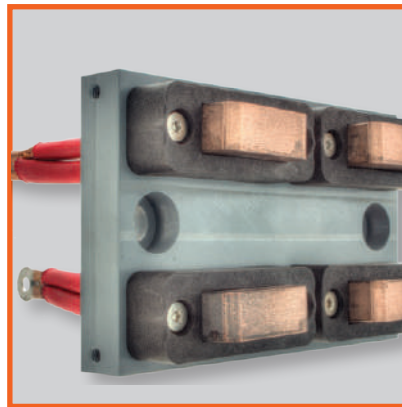
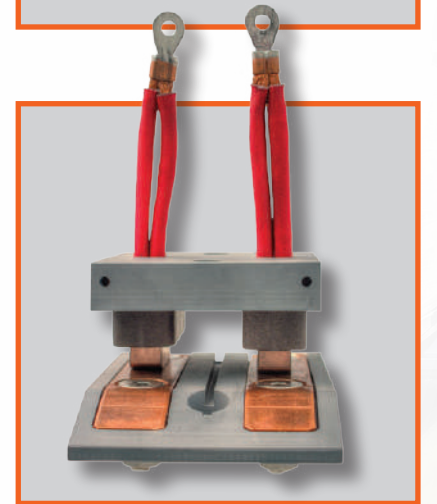
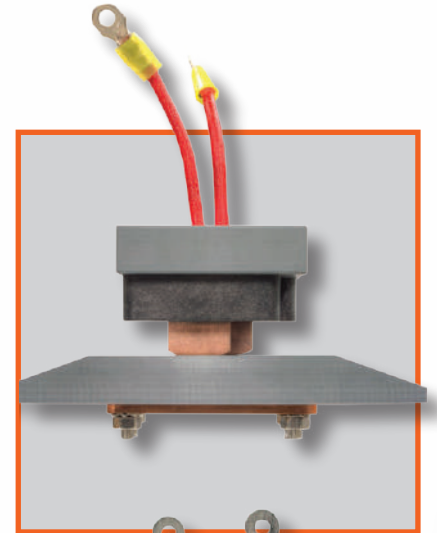


Ordering Options

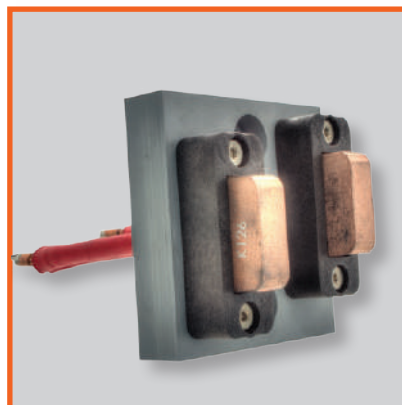
Available in either system packages or individual components to meet the needs of the application



Pilot Contact

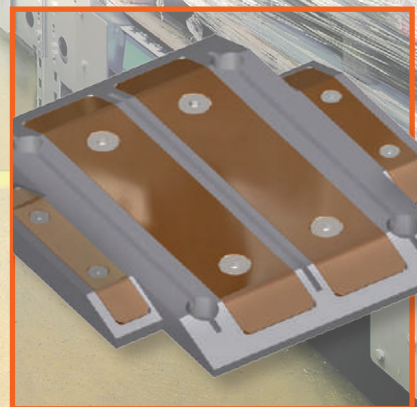
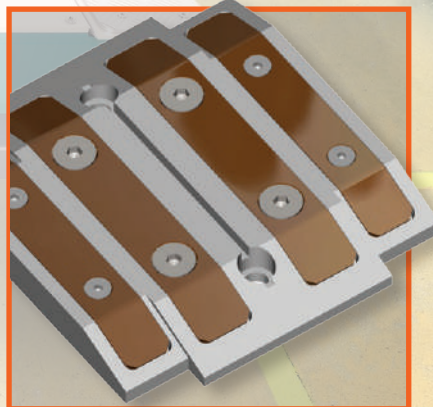
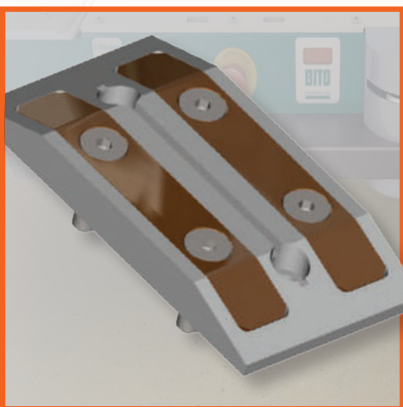


Collector



Collector

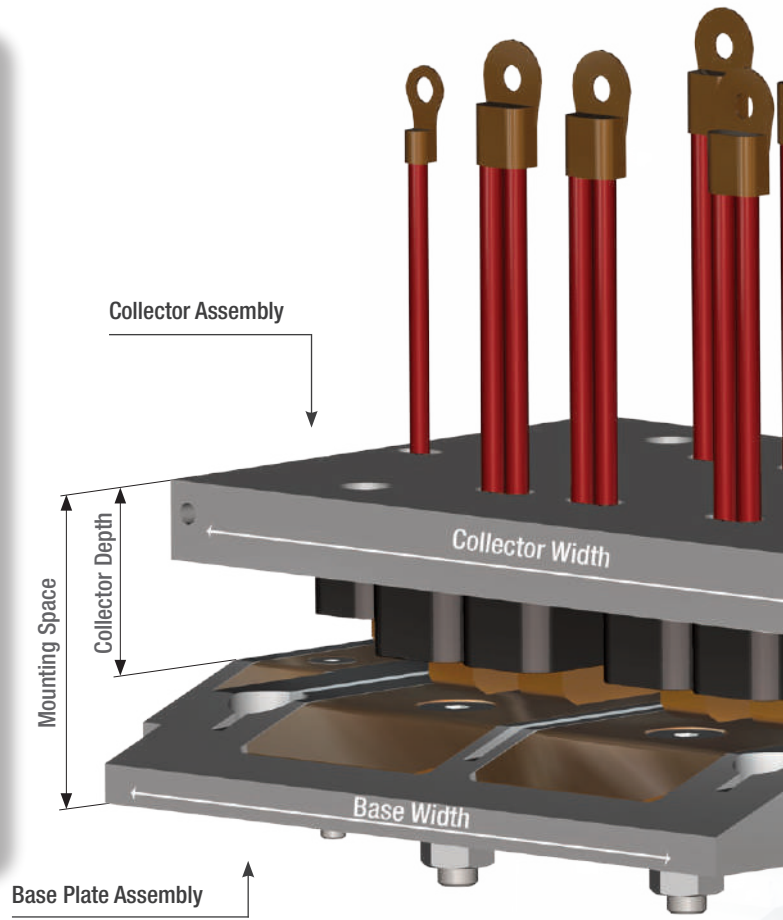
Amperage		Part No.		
100% Duty Cycle	50% Duty Cycle	System (1 Collector +1 Base)	Collector Only	Base Plate Only
20 A	40 A	XA-BCL020A2W0	XA-BCC020A2W0	XA-BCB020A2W0
50 A	100 A	XA-BCL050A2W0	XA-BCC050A2W0	XA-BCB050A2W0
75 A	150 A	XA-BCL075A2W0	XA-BCC075A2W0	XA-BCB075A2W0
100 A	200 A	XA-BCL100A2W0	XA-BCC100A2W0	XA-BCB100A2W0
150 A	300 A	XA-BCL150A2W0	XA-BCC150A2W0	XA-BCB150A2W0
200 A	400 A	XA-BCL200A2W0	XA-BCC200A2W0	XA-BCB200A2W0
300 A	600 A	XA-BCL300A2W0	XA-BCC300A2W0	XA-BCB300A2W0
200 A + 20 A	400 A + 40 A	XA-BCL200A2WP	XA-BCC200A2WP	XA-BCB200A2WP
300 A + 20 A	600 A + 40 A	XA-BCL300A2WP	XA-BCC300A2WP	XA-BCB300A2WP



Tech Specs

- Design compliant with UL 2231-2 Standard for electric vehicle supply circuits
- Charging contact for dry interior installations with operating voltage 12- 60 V DC or up to 25 V AC. If used for ELV and SELV applications, requirements of the voltage source and precautions regarding ELV and SELV guidelines need to be observed.
- Single and two phase systems
- Optional pilot contacts
- Voltages up to 60 V DC / 25 V AC
- Ampacities from 20 A to 600 A (100% duty cycle)
- Operating temperature range: -20 °C to +100 °C
- Positional tolerance:
X: ± 5 mm | Y: ± 5 mm | Z: ± 2 mm
- Our Pilot signal offering allows signaling before ramping up amperage for high current applications

Drawings and 3D-Models are available on request.



Amperage		Part No.		Length in mm (inches)	Width in mm (inches)	Base Height in mm (inches)
100% Duty Cycle	50% Duty Cycle	Collector	Base Plate			
20 A	40 A	XA-BCC020A2WO		57.2 (2.25)	57.2 (2.25)	14.3 (0.56)
			XA-BCB020A2WO	127 (5.00)	63.5 (2.50)	
50 A	100 A	XA-BCC050A2WO		63.5 (2.50)	63.5 (2.50)	16.0 (0.63)
			XA-BCB050A2WO	139.7 (5.50)	73 (2.88)	
75 A	150 A	XA-BCC075A2WO		76.2 (3.00)	76.2 (3.00)	16.0 (0.63)
			XA-BCB075A2WO	146.1 (5.75)	81 (3.19)	
100 A	200 A	XA-BCC100A2WO		109.6 (4.31)	63.5 (2.50)	16.0 (0.63)
			XA-BCB100A2WO	187.3 (7.38)	73 (2.88)	
150 A	300 A	XA-BCC150A2WO		122.3 (4.81)	76.2 (3.00)	16.0 (0.63)
			XA-BCB150A2WO	200 (7.88)	81 (3.19)	
200 A	400 A	XA-BCC200A2WO		109.6 (4.31)	127 (5.00)	16.0 (0.63)
			XA-BCB200A2WO	215.9 (8.50)	120.7 (4.75)	
300 A	600 A	XA-BCC300A2WO		122.3 (4.81)	168.3 (6.63)	18.6 (0.73)
			XA-BCB300A2WO	206.4 (8.13)	134.6 (5.30)	
200 A + 20 A	400 A + 40 A	XA-BCC200A2WP		109.6 (4.31)	120.7 (7.25)	16.0 (0.63)
			XA-BCB200A2WP	215.9 (8.50)	198.1 (7.80)	
300 A + 20 A	600 A + 40 A	XA-BCC300A2WP		122.3 (4.81)	206.4 (8.13)	19.1 (0.75)
			XA-BCB300A2WP	206.4 (8.13)	217.4 (8.56)	

Custom Solutions

If your application requires customization please contact Conductix Wampfler. We have extensive knowledge in mobile industrial electrification. Let our experienced team help create the perfect solution for your unique application.

- Custom footprint for existing solutions
- Custom voltage/amperage needs
- Other unique design requirements



Mounting Space in mm (inches)	Collector Depth in mm (inches) (uncompressed)
50.1 (1.97)	38.9 (1.53)
51.7 (2.00)	38.9 (1.53)
53.3 (2.10)	40.5 (1.59)
51.7 (2.00)	38.9 (1.53)
53.3 (2.10)	40.5 (1.59)
53.9 (2.12)	40.5 (1.59)
56.4 (2.22)	40.5 (1.59)
53.3 (2.10)	40.5 (1.59)
56.4 (2.22)	40.5 (1.59)



www.conductix.com

Conductix-Wampfler

has just one critical mission:

To provide you with energy and data transmission systems that will keep your operations up and running 24/7/365.

To contact your nearest sales office, please refer to:

www.conductix.com/en/contact-search

