

YOUR WISHES ARE OUR BENCHMARK

# Technical lighting

Catalogue



**GIFAS**  
ELECTRIC

09

## Portable work light

Pages 4 - 11

FlashLED  
Rechargeable  
battery light



Page 4

TorchLED  
Rechargeable  
battery hand-held  
light



Page 5

I-LED battery  
Industry  
LED spotlight



Page 6

Torch HR  
Battery head light



Page 6

WorkLED FLEX  
Rechargeable  
battery hand-held  
light



Page 7

Torch PENLIGHT  
Battery hand-held  
light



Page 7

## Portable work light

Pages 12 - 23

PrimaLED  
Area light



Pages 12 - 13

PrimaLIGHT  
Area light



Pages 12 - 13

MULTI  
Work light



Pages 14 - 15

NovaLED  
Work light



Pages 16 - 17

NovaLIGHT  
Work light



Pages 16 - 17

ApolloLED2  
Area light



Pages 18 - 19

## Industrial lights

Pages 22 - 29

LineLED2  
LED ceiling light



Page 22

StreamLIGHT  
SL70  
Protected tube  
lights



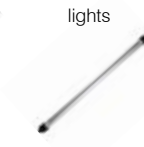
Pages 22 - 23

StreamLED  
SL50  
Protected tube  
lights



Pages 24 - 25

StreamLED  
Power  
Protected tube  
lights



Pages 24 - 25

Practical  
examples



Pages 26 - 27

## Workstation lights

Pages 28 - 31

MasterLED  
LED light



Page 28

SpotLED Flex  
LED spotlight



Page 29

LED laboratory  
light



Page 30

Practical  
examples



Page 31

## Spotlights

Pages 32 - 42

AlphaLUX  
LED spotlight



Pages 32 - 33

FlutLED2  
LED spotlight



Pages 34 - 35

FlutLED 30/50  
LED spotlight  
Low voltage



Page 35

SpotLED 24  
LED spotlight



Pages 36 - 37

SpotLED 230  
LED spotlight



Pages 38 - 39

Practical  
examples



Pages 40 - 42

S-series torch  
Battery  
hand-held lights



Page 8

StabiLED  
LED tubular light



Page 9

917  
Cage hand-held  
lamp



Page 9

911  
LED / halogen  
hand-held flood light



Pages 10 - 11

ApolloLIGHT  
Area light



Pages 18 - 19

Practical  
examples



Pages 20 - 21

## FlashLED Battery-powered light with emergency light function



State-of-the-art charging and monitoring electronics coupled with the latest LED technology form the basis of this development. The very latest Li ion technology ensures a high energy density and a superlative service life (up to 1,000 cycles), while the GIFAS battery management system monitors and safeguards all of the key battery operating parameters.

The swivel-mounted lighting head ensures customised illumination adapted to your working environment. The operating panel is easy to use and clearly laid out. If the supply voltage to the charging station fails, the light switches to "Emergency light" mode. Setting the magnetic switch to the "Emergency Light ON" position activates the emergency light function.

### Product characteristics

- Up to 9 hours of light in four selectable operating modes:
  - Spot: Concentrated and wide light beam
  - Wide: Space-illuminating light
  - Full light: Combination of spot and wide
  - Emergency light: Broad light cone
- Memory function (last setting is saved)
- Flash mode
- Infinitely dimmable
- Sturdy housing made from polyamide
- Corrosion-resistant charging contacts (gold-plated spring steel)
- Vertical swivel light head
- Charging station can be used as a wall-mounted model

### Technical data for light

Input voltage	7.2VDC
Power supply	Li ion battery, 4400mAh
Charging time	5h
Light duration	9h Spot (3 LED)
	7h Wide (2 LED)
	4h Full light (5 LED)
	3h Emergency light (5 LED)
Light source	5x3W PowerLED
	Luminous flux
Light colour	7000K
Protection type	IP65
Protection class	III
Temperature range Operation	-20°C to +45°C
	Charging
Housing	Polyamide
Weight	1120g
Dimensions (WxHxD) Light	125x260x92.5mm
Light incl. charging station	149x332x106mm

### Technical data for charging station

Input voltage	230VAC, 12/24VDC
Protection category	IP20
Protection class	II
Housing	Polyamide
Weight	430g
Dimensions (WxHxD)	149x276x95mm



FlashLED with charging station

Art. No.	Design
860025	FlashLED work and inspection light with emergency light function
860032	FlashLED 230VAC charging station, incl. 1.5m cable and Euro plug
860027	FlashLED 12/24 VDC charging station, with built-in plug (without cable)
266884	Charging cable with cigarette lighter plug, 2m
266850	FlashLED carrying strap

Also available as explosion protected version!

More information can be found in our catalogue 11 "Products for the Ex sector"

**TorchLED  
LED torch**



The TorchLED is an extremely practical, lightweight LED torch which, by virtue of its various light functions, can be used as a torch or as a signalling light. The red or green light function, for example, can be used to mark out hazardous areas or declare them safe again, accordingly. The TorchLED's non-slip, sturdy character makes it extremely reliable in this field of operation. The TorchLED has excellent impact and shock resistance, making it extremely robust and suitable for use even in harsh conditions.

**Product characteristics**

- Non-slip, impact-resistant, free-standing
- Strap holder / retaining clip made from POM
- Can be wall or desktop mounted
- Charging station with lamp retainer
- Including hand loop
- TorchLED with emergency light function: in the event of a power cut, the TorchLED will switch on automatically (wide full load, burn time approx. 4h)

**Technical data for light**

Power supply	
TorchLED	4x1.5V batteries AA or 4x12V NiMH batteries AA
TorchLED EMERGENCY	4x1.2V NiMH batteries AA
Charging time	5h with 2700mAh batteries
Light duration	h with 1900mAh batteries
Light source	2x white/2x red/2x green LEDs
Protection category	IP54
Temperature range	-20°C to +45°C
Housing	PA6 with elastomer-surrounded handle parts
Weight	230g
Dimensions(WxHxD)	67.8x115.5x34mm

**Technical data for charging station**

Power supply	700mA charging current
Protection category	IP20
Contacts	Spring steel, gold-plated
Temperature range	0°C to +40°C
Housing	ABS
Dimensions (WxHxD)	86.6x79.6x44mm

**TorchLED  
LED torch with emergency light function**



**TorchLED  
Light functions with batteries or rechargeable batteries**

Main function	Functions	Operating time Battery	
		Rechargeable battery	
White light per 1 LED	Spot full load	Approx. 6h	Approx. 6h
	Spot dimmed	> 80h	> 80h
	Wide full load	Approx. 6h	Approx. 6h
	Wide dimmed	> 80h	> 80h
Signal lights per 2 LED	Full load	> 40h	> 30h
	dimmed	> 80h	> 60h

**TorchLED with emergency light function  
Light functions with rechargeable batteries**

Main function	Functions	Operating time
White light per 1 LED	Spot full load	Approx. 6h
	Spot dimmed	> 60h
	Wide full load	Approx. 6h
	Wide dimmed	> 60h
Signal lights per 2 LED	Full load	> 30h
	dimmed	> 60h

Art. No.	Design
860237	TorchLED for battery or rechargeable battery (excl.), IP54, incl. hand loop
860236	TorchLED emergency light for battery or rechargeable battery (excl.), IP54, incl. hand loop
860276	TorchLED 230VAC/15VDC charging station, IP20, incl. 1.5m cable with plug transformer
860274	NiMH 1900 mAh rechargeable battery (AA)

## I-LED battery Industrial LED spotlight



The I-LED battery-powered light with base magnet is a highly robust, cable-free work light for professional use. The powerful light ensures a safe working environment. Whether it be positioned on the floor, wall or ceiling - a powerful magnet in the base plinth of the light allows it to be located wherever two-handed working is needed.

### Product characteristics

- Full luminous flux available immediately
- Low energy consumption with a high light yield
- Minimal temperature development
- Extremely switching-resistant (> 1 million)
- Maintenance-free
- No UV / IR radiation
- Insensitive to shock and vibration
- With charge and capacity display via LED
- Black aluminium housing with artificial glass cover
- Holding / hanging bracket 180° pivotable

### Technical data

Input voltage	7.4VDC
Power supply	Li ion 4400mAh
Charging time	Approx. 7h
Light duration	9h mode 60% 5h mode 100%
switching mode	100, 60%, SOS (flashing), OFF
Light source	5x 3W LED
Luminous flux	900lm
Light colour	6500K
Beam angle	Flood 90°
Protection category	IP65
Protection class III	
Temperature range	Operation -20°C to +45°C Charging +10°C to +30°C
Housing	Aluminium
Cover	Plastic
Weight	850g incl. battery
Dimensions (WxHxD)	115x231x100mm

Art. No.	Design
284480	I-LED battery light with magnet incl. 230V plug-in power pack and connector for 12V cigarette lighter
284481	5-way charging cable 230 VAC



Optional: 5-way charging adapter 230 VAC

## Torch HR Battery head light



With a maximum output of 420 Lumens, this headlamp is a true lighting marvel. Its lightweight design conceals the very best technology. Thanks to its 2 levels of brightness, the selectable focus and pivot LED head, the Torch HR makes your work in environments with poor lighting easier and most importantly safer.

### Product characteristics

- Rechargeable through Li ion battery
- 2 brightness levels, high beam (100%), dipped beam (20%)
- Stepless regulation between narrow and wide beam
- LED head can be pivoted into various positions up to 90°
- Soft, adjustable, elasticrubber strap for maximum wearing comfort
- Red LED warning light on the back

### Technical data

Power supply	Li ion battery, 2600mAh
Light duration	8h High beam 16h Dipped beam
Beam width	150m
Beam width	1.6m at a distance of 1m
Light source	5W CREE LED
Luminous flux	420lm High beam 82lm Dipped beam
Light colour	7500K
Protection category	IP65
Temperature range	-5°C to +40°C
Housing	Aluminium
Lens	Acrylic
Weight	164 g incl. battery
Dimensions(ØxL)	33x45mm

Art. No.	Design
800038	Torch HR battery head light

**WorkLED FLEX**  
Rechargeable battery hand-held light



**Torch PENLIGHT**  
Battery hand-held light



The WorkLED FLEX battery hand-held light is a highly robust, cable-free work light for professional use. Equipped with a flexible joint function, you can light up even hard-to-access areas. Whether it be positioned on the floor, wall or ceiling - a powerful magnet in the base of the light and a hook on the light head allow the WorkLED FLEX to be located wherever two-handed working is needed.

**Product characteristics**

- State-of-the-art LED chip-on-board (COB) technology
- Joint function from 45° to 90° in both directions
- Shatter-proof, rubberised, long-lasting ABS housing
- Lens made from shatter-proof and impact-resistant polycarbonate
- Ergonomically shaped handle
- Powerful magnet in the base, sticks to all metal surfaces
- Durable, pivotable fastening hook
- incl. 230V charger unit

**Technical data**

Power supply	Li ion battery
Charging time	4h
Light duration	5h
Light source	3W COB LED
Luminous flux	350lm
Light colour	5500K
Protection category	IP54
Temperature range	-5°C to +40°C
Housing	ABS
Lens	Polycarbonate
Weight	300g
Dimensions (WxLxD)	280x48x40mm

This compact and handy Mini LED torch is equipped with a practical belt clip. A magnet in the base allows your working environment to be illuminated even while you are working with both hands.

**Product characteristics**

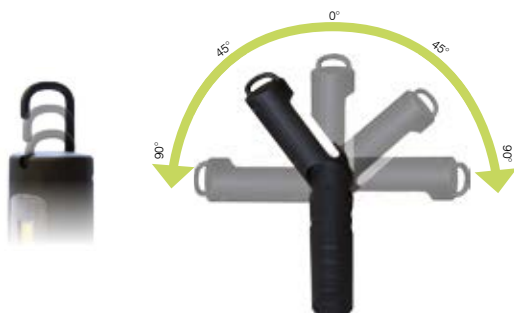
- Magnet in the base
- Incl. belt clip and batteries

**Technical data**

Power supply	3xAAA
Light duration	6 h
Light source	6x0.5W COB LED
Luminous flux	200lm
Light colour	5500K
Temperature range	-5°C to +40°C
Weight	33g
Dimensions (ØxL)	20x160mm

Art. No.	Design
800006	WorkLED FLEX
287420	Car charging cable 12/24VDC

Art. No.	Design
800008	Torch PENLIGHT



## S-series torch Battery hand lights



Torch S1



Torch S5



Torch S7



This robust torch is suitable for professional use indoors and outdoors. The advantages of this torch include the even light distribution, pleasant light colour and great feel.

A specially hardened light head means that the Torch S series can act as a hammer in an emergency for shattering windows.

### Product characteristics

- Attractive design
- Housing made from aircraft-grade aluminium
- Optical focus with slider function for maximum flexibility
- Gold-plated contacts
- On/Off switch in the handle part
- Incl. batteries, hand loop, belt holster on the S5 and S1
- Torch S1 with 6 digital functions:
  - Broad beam
  - Stepless dimming (1-100%)
  - Narrow beam
  - Strobe light
  - Flash
  - SOS signal

### Technical data for Torch S1

Power supply	4xAAA/1.5V
Light duration	51h
Light source	5W CREE LED
Luminous flux	420lm
Protection category	IP65
Weight	176g incl. batteries
Dimensions (ØxL)	37x139mm

### Technical data for Torch S5

Power supply	3xAAA/1.5V
Light duration	30h
Light source	5W CREE LED
Luminous flux	320lm
Protection category	IP65
Weight	86g
Dimensions (ØxL)	32x123mm

### Technical data for Torch S7

Power supply	2xAAA/1.5V
Light duration	3.5h
Light source	3W CREE LED
Luminous flux	110lm
Protection category	IP65
Weight	94 g incl. batteries
Dimensions (ØxL)	15x137mm

Art. No.	Design
800001	Torch S1 battery hand light
800002	Torch S5 battery hand light
800003	Torch S7 battery hand light



**StabiLED**  
LED tubular light



Innovative lighting technology with increased safety is the basis for our development of the StabiLED series. Outstanding light power with minimal energy consumption is its hallmark feature.

**Product characteristics**

- Grip and cap made from insulating material with shock-attenuating protective edges
- Glare-free work light distributed along a long length
- Built-in electronics with protection module
- Handy hanging device with rotating hook
- Unaffected by temperature fluctuations
- Oil, acid and ageing resistant, self-extinguishing

**Technical data**

Input voltage	230VAC, 42/24VAC/DC
Power supply	Mains connection
Light source	6x1W high-power LEDs
Luminous flux	2600lm
Service life	> 70,000h
Protection category	IP55
Protection class	II / III
Housing	Solid rubber
Housing	Polycarbonate
Weight	250g (without cable)
Dimensions (ØxL)	60x500mm

Art. No.	Design	Supply cable	Plug
256735	24V	5m 2x1.0mm <sup>2</sup>	CEE 16A/24V
256738	24V	10m 2x1.0mm <sup>2</sup>	CEE 16A/24V
256737	42V	5m 2x1.0mm <sup>2</sup>	CEE 16A/42V
256739	42V	10m 2x1.0mm <sup>2</sup>	CEE 16A/42V
256733	230V	5m 2x1.0mm <sup>2</sup>	Contour plug
256734	230V	10m 2x1.0mm <sup>2</sup>	Contour plug

**Accessories / spare parts**

256731	Electronics for 24/48VAC/DC
256724	Electronics for 230V
256725	Protective tube for 24/42 and 230V
258153	Rubber cap with hook
258151	Rubber grip
258234	Magnetic holder, holding force 209 N with clamping bridge
258915	Suction cup holder with clamp

**917**  
Cage hand-held lamp



The cage hand-held lamp is a sturdy and practical all-purpose light. It is impact-resistant and impervious to chemical influences. It is therefore ideal for hobby as well as construction site or industrial applications.

**Product characteristics**

- The impact-resistant carrying grip is made from rubber.
- The stable protective grille with hanging hook can be removed.
- The safety glass is resistant to temperature fluctuations.

**Technical data**

Operating voltage	230V	24V, 42V
Illuminant	60W halogen bulb	50W halogen bulb
Protection category	IP20	IP20
Protection class	II	III
Weight	600g	600g

Art. No.	Design	Supply cable	Plug
203263	24V/50W	-	-
203264	24V/50W	5m 2x1.0mm <sup>2</sup>	CEE 16A/24V
128899	24V/50W	10m 2x1.0mm <sup>2</sup>	CEE 16A/24V
203266	42V/50W	-	-
203267	42V/50W	5m 2x1.0mm <sup>2</sup>	CEE 16A/42V
203268	42V/50W	10m 2x1.0mm <sup>2</sup>	CEE 16A/42V
132620	230V/60W	-	-
134712	230V/60W	5m 2x1.0mm <sup>2</sup>	Contour plug
121239	230V/60W	10m 2x1.0mm <sup>2</sup>	Contour plug

**Accessories / spare parts**

105084	Spare glass
105129	Reflector
128813	24 V / 50W halogen bulb bayonet base
202826	42V / 50W halogen bulb bayonet base
123824	BA 15d socket with flange fastening
105086	Spare protective cage
245896	Illuminant 230V/60W/E27

Other designs available upon request

## 911 LED hand-held floodlight



The powerful 911 hand-held floodlight is now also available with the latest LED technology.

### Product characteristics

- Protectively insulated, impact-resistant light body made from solid rubber with hanging ring
- Ergonomic handle with combination switch for constant light and pulsed operation
- Shatter-proof safety glass
- Combination ON/OFF switch and touch function

### Technical data

Input voltage	230/42/24VAC
Power supply	Mains connection
Light source	6x2W LEDs
Luminous flux	1400lm
Protection category	IP54
Protection class	II / III
Housing	Solid rubber
Cover	Safety glass
Weight	1200g (without cable)

Art. No.	Design	Supply cable	Plug
276195	24VAC/7.5W	5m 2x1.5mm <sup>2</sup>	CEE 16A/24V
274285	24VAC/7.5W	10m 2x1.5mm <sup>2</sup>	CEE 16A/24V
273643	42VAC/7.5W	10m 2x1.5mm <sup>2</sup>	CEE 16A/42V
279566	42VAC/7.5W	5m 2x1.5mm <sup>2</sup>	CEE 16A/42V
274286	230VAC/7.5W	3m 2x1.5mm <sup>2</sup>	230V protective contact

### Accessories / spare parts

105119	Rubber housing for light
105623	Toggle switch
274580	LED driver 24-42 VAC/DC for 911LED, without housing
270241	LED PCB for 911LED

## 911 Halogen hand-held floodlight



This is a powerful and compact hand-held floodlight ideal for use as a search or inspection light.

### Product characteristics

- Protectively insulated, impact-resistant light body made from solid rubber with hanging ring
- Ergonomic handle with combination switch for constant light and pulsed operation
- Spot beam as standard PS (narrow, concentrated light cone up to 250 m) or broad beam BS

### Technical data

Input voltage	230V, 42V, 24V
Power supply	Mains connection / cigarette lighter plug
Light source	Halogen reflector lamp 75W/100W
Protection category	IP55
Protection class	III
Housing	Solid rubber
Cover	Safety glass
Weight	900g (without cable)

Art. No.	Design	Supply cable	Plug
203478	24V/75W BB	5m 2x1.5mm <sup>2</sup>	CEE 16A/24V
203484	24V/75W BB	10m 2x1.5mm <sup>2</sup>	CEE 16A/24V
112443	24V/100W SB	5m 2x1.5mm <sup>2</sup>	CEE 16A/24V
109983	24V/100W SB	10m 2x1.5mm <sup>2</sup>	CEE 16A/24V
203460	42V/75W BB	5m 2x1.5mm <sup>2</sup>	CEE 16A/42V
203464	42V/75W BB	10m 2x1.5mm <sup>2</sup>	CEE 16A/42V
112449	42V/100W SB	5m 2x1.5mm <sup>2</sup>	CEE 16A/42V
246512	42V/100W SB	10m 2x1.5mm <sup>2</sup>	CEE 16A/42V
114078	230/24/75 W SB	5m 2x1.5mm <sup>2</sup>	Connector power pack
209396	230/24/75 W SB	5m 2x1.5mm <sup>2</sup>	Connector power pack

### Accessories / spare parts

105119	Rubber housing for light
105623	Toggle switch
104760	Spare reflector for 75 W broad beam light, socket, front pane
104761	Spare reflector for 75 W spot beam light, socket, Windscreen
105063	Spare socket for 75 W
110223	Spare glass for 75 W
104739	24 V / 75 W halogen bulb
202018	42V / 75 W halogen bulb
104759	24 V / 42 V / 100 W halogen bulb, socket, reflector
112727	Connector power pack

**911  
Additional options**



In accordance with applicable regulations, energy consumers with appropriate protective low voltages must be used in areas where there are conductive materials.

The combination halogen hand-held floodlight with cable reels is specifically ideal for use during inspection work in large boiler tanks, containers and similar vessels.

**Characteristic of the halogen version**

Safety transformer built into the reel body.

**Characteristic of the LED version**

No safety transformer and/or use of an autonomous safety transformer.

**Mobile safety transformer**

Another possibility comes with the use of an autonomous safety transformer.

Characteristic: can also be used in other ways

**Important! The relevant application regulations must be observed when using these additional options.**

Art. No.	Design
259805	911 hand-held floodlight, 100W, spotlight on cable reel fully equipped with 25m supply cable 2x2.5 mm <sup>2</sup> on main reel, 230/24V-120VA toroidal core transformer built in, 5m 2x1.5mm <sup>2</sup> supply cable with contour plug on auxiliary reel
259807	911 hand-held floodlight, 75W, broad beam light, on cable reel fully equipped with 25m cable, supply cable 2x2.5mm <sup>2</sup> on main reel, 230V/24V-120VA toroidal core transformer built in, supply cable 5m, 2x1.5mm <sup>2</sup> with contour plug on auxiliary reel
208768	Mobile safety transformer, housing type 2516 120VA, 230/24V
208628	Mobile safety transformer, housing type 2516 120VA, 230/42V



FlashLED rechargeable battery hand-held light



TorchLED torch emergency light in construction site distributor



911 LED-Handscheinwerfer

Other designs available upon request.

## PrimaLED 30W flood light



### Product characteristics

- Full light flux available immediately
- Low energy consumption with a high light yield
- Minimal temperature development
- Extremely switching-resistant (> 1 million)
- Maintenance-free
- No UV / IR radiation
- Carrying handle also serves as a support which, when engaged, moves the lights to the desired position
- Impact and shock resistant, water and dust-proof

### Technical data

Input voltage	230VAC, 24/42VAC/DC
Power supply	Mains connection
Light source	60x0.5W SMD-LEDs
LED efficiency	120lm/W
Light colour	5000K
Protection category	IP65 (without socket) IP54 (with socket)
Protection class I (230V with socket)	II (230V without socket) III (24/42 V)
Temperature operating range	-20°C to +40°C
Housing	Polycarbonate
Cover	Satin-finish Macrolon
Weight	3.1kg
Dimensions (WxHxD)	305x295x110mm

Art. No.	Design	Socket	Supply cable	Plug
283631	24V/30W	CEE 24V	5m 2x1.5mm <sup>2</sup>	CEE 16A/24V
283632	24V/30W	-	5m 2x1.5mm <sup>2</sup>	CEE 16A/24V
283633	24V/30W	CEE 24V	10m 2x1.5mm <sup>2</sup>	CEE 16A/24V
283634	24V/30W	-	10m 2x1.5mm <sup>2</sup>	CEE 16A/24V
283635	42V/30W	CEE 42V	5m 2x1.5mm <sup>2</sup>	CEE 16A/42V
283636	42V/30W	-	5m 2x1.5mm <sup>2</sup>	CEE 16A/42V
283637	42V/30W	CEE 42V	10m 2x1.5mm <sup>2</sup>	CEE 16A/42V
283638	42V/30W	-	10m 2x1.5mm <sup>2</sup>	CEE 16A/42V
283640	230V/30W	PC*	5m 3x1.5mm <sup>2</sup>	PC*
283641	230V/30W	-	5m 2x1.5mm <sup>2</sup>	Contour plug
283642	230V/30W	PC*	10m 3x1.5mm <sup>2</sup>	PC*
283643	230V/30W	-	10m 2x1.5mm <sup>2</sup>	Contour plug

\*PC = protective contact

## PrimaLIGHT 38W/55W flood light



### Product characteristics

- Yellow housing made from impact-resistant polycarbonate with black rubber edges providing shock and impact protection
- Carrying handle also serves as a support which, when engaged, moves the lights to the desired position
- Bulb cover made from Macrolon: shock and impact resistant, seals housing to make it water and dust-proof

### Technical data

Input voltage	230VAC, 42V
Power supply	Mains connection
Light source	Compact fluorescent bulb
	38W/2D, 55W/2D
Luminous flux	38W/2850lm, 55W/3900lm
Protection category	IP65 (without socket) IP54 (with socket)
Protection class	I (230V with socket) II (230V without socket) III (42V)
Housing	Polycarbonate
Cover	Macrolon
Weight	2.9kg
Dimensions (WxHxD)	305x295x110mm

### PrimaLIGHT 38W

Art. No.	Design	Socket	Supply cable	Plug
230493	42V/38W	-	5m 2x1.5mm <sup>2</sup>	CEE 16A/42V
231069	42V/38W	-	10m 2x1.5mm <sup>2</sup>	CEE 16A/42V
230515	230V/38W	-	5m 2x1.5mm <sup>2</sup>	Contour plug
230768	230V/38W	-	10m 2x1.5mm <sup>2</sup>	Contour plug
231336	42V/38W	CEE 42V	5m 2x1.5mm <sup>2</sup>	CEE 16A/42V
232004	42V/38W	CEE 42V	10m 2x1.5mm <sup>2</sup>	CEE 16A/42V
230521	230V/38W	PC*	5m 3x1.5mm <sup>2</sup>	PC*
230611	230V/38W	PC*	10m 3x1.5mm <sup>2</sup>	PC*

\*PC = protective contact

### PrimaLIGHT 55W

Art. No.	Design	Socket	Supply cable	Plug
261699	42V/55W	-	5m 2x1.5mm <sup>2</sup>	CEE 16A/42V
251939	230V/55W	-	5m 2x1.5mm <sup>2</sup>	Contour plug
253897	230V/55W	PC*	5m 3x1.5mm <sup>2</sup>	PC*
253896	230V/55W	-	10m 2x1.5mm <sup>2</sup>	Contour plug
253899	230V/55W	PC*	10m 3x1.5mm <sup>2</sup>	PC*

\*PC = protective contact

12VDC/38W special designs upon request.

Other designs available upon request.

Other designs available upon request.

**PrimaLED / PrimaLIGHT  
Accessories**

Accessories / spare parts	
262926	Basic stand - height 1.20m to 2.00m, load up to 30kg
261246	Plus stand 3-part - height 1.22m to 2.75m
261251	Mobile Plus stand 3-part - height 1.22m to 2.75m
261249	Plus stand 4-part - height 1.30m to 4.00m
261253	Mobile Plus stand 4-part - height 1.30m to 4.00m
271698	Uni stand top piece
273561	Uni stand top piece - extension for 1 x PrimaLIGHT
264916	Twin adapter for 1+1 light Span width adjustable from 310mm to 490mm
284468	Windscreen PrimaLED
230991	Windscreen PrimaLIGHT
230801	Reflector
230802	Handle
230810	Wall fitting
248199	Ceiling bracket
258506	Magnetic bracket
235824	Plus magnetic bracket
234627	Socket for 55W energy saving bulb
268645	EBU ballast unit for PRIMA up to 38W at 42VAC
267323	EBU ballast unit for 230V/38W PRIMA
235185	EBU ballast unit for 230V/55W PRIMA
230910	Socket for 38 W energy saving bulb
206377	Illuminant 38 W energy saving bulb
234139	Illuminant 55W energy saving bulb

Screw-fix ceiling bracket with locking mechanism  
Art. No. 248199



Ceiling mounting

Screw-fix wall bracket Art. No. 230810



Wall mounting

Uni stand top piece  
Art. No. 271698



Uni stand top piece extension for 1x Prima  
Art. No. 273561



Twin adapter for stand top piece 1+1 Prima Art. No.: 264916



Basic stand Art. No. 262926



Plus magnetic bracket  
Art. No. 235824



Magnetic bracket for ceiling / wall mounting  
(1 light) with locking mechanism  
Art. No. 258506



Prima floodlight with three ring eyelets equipped for chain, hanging, etc.  
Art. No. on request



Plus stand 3-part\* Art. No. 261246



Prima floodlight with 3-point attachment plate and articulated clip V2A, horizontally and vertically adjustable, Art. No. on request



\* on request also  
3-part mobile Art. No. 261251  
4-part mobile Art. No. 261249  
4-part mobile Art. No. 261253

## MULTI 72W work light



□ dependent on design

The MULTI work light is a very special, sophisticated and professional light for industrial and commercial use. With its impressive light output (2x2, 800lm) and extremely low heat generation, it is designed for very specialist applications. It guarantees optimised floodlighting with glare-free, powerful and bright white light. Various setup options ensure a broad range of possible uses.

### Product characteristics

- Black housing made from polycarbonate with rubber jacket to reinforce the edges
- Practical handle, makes carrying easier, also serves as a simple hanging tool
- Bulb cover made from Macrolon: shock and impact resistant, seals housing to make it water and dust-proof
- Low current consumption: 72 Watt energy saving bulb

### Technical data

Input voltage	230/42/24VAC
Power supply	Mains connection
Light source	Dulux F compact fluorescent bulb
Luminous flux	2x2800lm
Protection category	IP65 (without socket) IP54 (with socket)
Protection class	I (230V with socket) II (230V without socket) III (24/42V without socket)
Housing	Polycarbonate
Cover	Macrolon
Weight	230V 4.1kg, 24/42V 5.2kg
Dimensions (WxHxD)	305x295x170mm

**D labelling on the 230VAC / 2x36 W design as per VDE 0711-2-24 or EN 60598-2-24**

Art. No.	Design	Socket	Supply cable	Plug
235417	230V/2x36W	-	5m 2x1.5mm <sup>2</sup>	Contour plug
235418	230V/2x36W	-	10m 2x1.5mm <sup>2</sup>	Contour plug
235592	230V/2x36W	Protective contact	3m 1x1.5mm <sup>2</sup>	Protective contact
235548	230V/2x36W	Protective contact	10m 3x1.5mm <sup>2</sup>	Protective contact
235422	24V/2x36W	-	5m 2x1.5mm <sup>2</sup>	CEE 16A/24V
235425	24V/2x36W	-	10m 2x1.5mm <sup>2</sup>	CEE 16A/24V
235593	24V/2x36W	CEE 24V	5m 2x2.5mm <sup>2</sup>	CEE 16A/24V
235706	24V/2x36W	CEE 24V	10m 2x1.5mm <sup>2</sup>	CEE 16A/24V
235421	42V/2x36W	-	5m 2x1.5mm <sup>2</sup>	CEE 16A/42V
235420	42V/2x36W	-	10m 2x2.5mm <sup>2</sup>	CEE 16A/42V
235594	42V/2x36W	CEE 42V	5m 2x2.5 mm <sup>2</sup>	CEE 16A/42V
235709	42V/2x36W	CEE 42V	10m 2x2.5mm <sup>2</sup>	CEE 16A/42V

### Accessories / spare parts

209422	Illuminant 36W energy saving bulb
230991	Windscreen
247792	Reflector fully pre-installed with socket and bulb bracket
114602	Magnetic clamp
209423	Socket for 36 W energy saving bulb
209424	Bracket for 36 W energy saving bulb
261246	Plus stand 3-part - height 1.22m to 2.75m
261251	Mobile Plus stand 3-part - height 1.22m to 2.75m
261249	Plus stand 4-part - height 1.30m to 4.00m
261253	Mobile Plus stand 4-part - height 1.30m to 4.00m
264916	Twin adapter for 1+1 light or 2+2 lights Span width adjustable from 310mm to 490mm
273561	Uni stand top piece - extension for 2 x MULTI
271698	Uni stand top piece
247796	Electronic EV6 230V
237099	Toroidal core transformer for low voltage 24/42V
236744	Fastening clips

Other designs, e.g. with fastening clip or magnets, available on request.

**MULTI  
Accessories**

Magnetic clamp Art. No. 114602



Fastening clamp Art. No. on request



Aluminium wall bracket, swivels with articulated joint, Art. No. 236744



Hanging design using 4 ring eyelets  
(chains, hanging, etc. at construction site), Art. No. on request



2-way clip for stand Art. No. 236484



Plus stand 3-part\* Art. No. 261246



\* on request also mobile 3-part Art. No. 261251;  
4-part mobile Art. No. 261249; 4-part mobile Art. No. 261253

Can be combined with magnetic clamps, Art. No. on request



Wall or ceiling mounting



Fixed ceiling or wall mounting with wall / ceiling mounting plate  
Art. No. 258506



Twin adapter for stand top piece Art. No. 264916 2 + 2 lights



Uni stand top piece Art. No. 271698



Uni stand top piece - extension for 2 x MULTI Art. No. 273561



## NovaLED 60W work light



## NovaLIGHT 4x36W work light



The tried and tested concept of the NovaLIGHT work light is now available with innovative LED technology. This enables you to benefit from all of the advantages the LED technology has to offer!

Thanks to state-of-the-art LED technology, the full luminous flux is available immediately after switch-on. There is no time delay of the type seen with fluorescent bulbs.

The NovaLIGHT work light is a technically sophisticated, professional lighting solution with excellent lighting output and low energy requirements. It guarantees optimised floodlighting with glare-free, evenly distributed light. It also offers various setup options for any application: hanging, lying or standing.

### Product characteristics

- Housing made from impact-resistant polycarbonate
- Rubber edges as impact and shock protection
- Satin finish windscreen made from shock and impact-resistant Macrolon
- Housing is water and dust-proof
- Carrying and positioning handle for any lighting position

### Product characteristics

- Housing made from impact-resistant polycarbonate
- Rubber edges as impact and shock protection
- Bulb cover made from shock and impact-resistant Macrolon
- Carrying and positioning handle for any lighting position

### Technical data

Input voltage	90 to 300VAC / 130 to 430VDC
Power supply	Mains connection
Light source	120x0.5W LEDs
System power	70 W
Luminous flux	7200lm
Light colour	5000K
Service life	> 50,000h
Protection category	IP54
Protection class	I/II
Housing	Polycarbonate
Cover	Macrolon
Weight	4.5kg
Dimensions (WxHxD)	330x490x125mm

### Technical data

Input voltage	230VAC, 42/24V
Power supply	Mains connection
Light source	Compact fluorescent bulbs
Luminous flux	11000lm
Protection category	IP54
Protection class	II
Housing	Polycarbonate
Cover	Macrolon
Weight	5.2kg
Dimensions (WxHxD)	330x490x125mm

**D labelling on the 230VAC / 4x36W design as per VDE 0711-2-24 or EN 60598-2-24**

Art. No.	Design	Socket	Supply cable	Plug
800012	90-300VAC / 130-430VDC / 60W	-	5m 3x1.5mm <sup>2</sup>	Protective contact
800013	90-300VAC / 130-430VDC / 60W	3 protective contacts	5m 3x1.5mm <sup>2</sup>	Protective contact

Art. No.	Design	Socket	Supply cable	Plug
259172	230V/4x36W	-	5m 3x1.5mm <sup>2</sup>	Protective contact
259201	230V/4x36W	3 protective contacts	5m 3x1.5mm <sup>2</sup>	Protective contact
262338	230V/4x36W	-	10m 3x1.5mm <sup>2</sup>	Protective contact
264353	230V/4x36W	3 protective contacts	10m 3x1.5mm <sup>2</sup>	Protective contact
264842	24V/4x36W	-	5m 2x1.0mm <sup>2</sup>	CEE 16A/24V
265832	42V/4x36W	-	5m 2x1.0mm <sup>2</sup>	CEE 16A/42V
269458	Luminous square 4x NovaLIGHT			

Low voltage on request.

Other designs available upon request.



**NovaLED / NovaLIGHT  
Accessories**

**Accessories / spare parts**

260026	Illuminant compact fluorescent bulb 36 W
260867	Reflector
285580	Windscreen NovaLED
260868	Windscreen NovaLIGHT
262926	Basic stand - height 1.20m to 2.00m, load up to 30kg
261246	Plus stand 3-part - height 1.22m to 2.75m
261251	Mobile Plus stand 3-part - height 1.22m to 2.75m
261249	Plus stand 4-part - height 1.30m to 4.00m
261253	Mobile Plus stand 4-part - height 1.30m to 4.00m
264916	Twin adapter (Premium stand) for 1+1 light or 2+2 lights Span width adjustable from 310 mm to 490 mm
271698	Uni stand top piece (Premium stand)
273561	Uni stand top piece (Premium stand) Extension for 2x NovaLIGHT
278852	Stand top piece (Plus 3-piece stand) for 1x NovaLIGHT
278853	Stand top piece (Plus 3-piece stand) for 2x NovaLIGHT

Frame for NovaLIGHT incl. fastening material Art. No. 277992



Luminous square comprising 4 NovaLIGHTs  
Can be swivelled from 0-90°, solid steel tube frame,  
suspended or for stand mounting Art. No. 269458



Twin adapter for stand top piece Art. No. 264916 2 + 2 lights



Uni stand top piece Art. No. 271698



Uni stand top piece - extension for 2 x NovaLIGHT Art. No. 273561



Stand top piece (Plus 3-piece stand) for 1x NovaLIGHT Art. No. 278852  
Stand top piece (Plus 3-piece stand) for 2x NovaLIGHT Art. No. 278853



Plus stand 3-part\* Art. No. 261246

Basic stand Art. No. 262926



\* on request also  
3-part mobile Art. No. 261251  
4-part mobile Art. No. 261249  
4-part mobile Art. No. 261253

## ApolloLED2 Area light

**NEW**



The ApolloLIGHT, a model that has proven its efficiency for many years, has now undergone a second development. The ApolloLED2 is the latest generation of our large area lights.

### Product characteristics

- Full power, immediately after switch-on
- Immediately ready for use even at extremely low temperatures
- Low wind load
- No warm-up period, no cool-down period
- Robust design, illuminant cannot shatter or break
- Practical, rapid and simple assembly by one person
- Operation with integrated power packs

### Technical data

Input voltage	100~277VAC
Light source	896x0.5W SMD-LEDs
System power	538W*
Luminous flux	up to 53,760lm
LED efficiency	120lm/W
Light colour	5000K
Service life	> 50,000h
Protection category	IP44 (IP54 from above)
Protection class	I
Temperature operating range	-25°C to +45°C
Housing	Plastic
Cover	Plastic
Weight	11kg
Dimensions (ØxL)	205x900mm
Power packs	2
Opt. deployment height	3500mm
Illumination area	over 700m <sup>2</sup>
Full power	Immediately

\*System power is dependent on the operating mode

### Technical data

#### Transport case

Weight	8.6kg
Dimensions (WxLxH)	280x1180x300mm

#### Tripod

Weight	21.5kg
Dimensions	
Height extended	3580mm
Diameter / foot circle	1280mm
Load capacity	30kg

Further information can be found in our product information update 9|12.

## ApolloLIGHT Area light



/depending on design

The ApolloLIGHT is a large area light for all-round illumination. This system can be set up quickly and easily, thereby saving time and money. The lighting system is equipped with special Dulux energy-saving bulbs which deliver excellent performance yet have only low power consumption.

### Product characteristics

- No warm-up period, no cool-down period
- Low wind load
- Practical, rapid and simple assembly by one person
- Operation with integrated ballast unit
- 1 illuminant faulty / 7 illuminants continue to light up
- 1 ballast unit faulty / 6 illuminants continue to light up
- Inexpensive replacement illuminants and ballast units

### Technical data

Input voltage	230VAC, 42VAC
Light source	230V 8x80W
	42V 8x55W
System power	230V 365W / 710W*
	42V 240W / 480W*
Luminous flux	230V 44000lm
	42V 38400lm
Light colour	4000K
Service life	16000h
Protection category	IP44
Protection class	230V I
	42V III
Temperature range	Operation -25°C to +40°C
	Storage -35°C to +80°C
Housing	Plastic
Cover	Plastic
Weight	8.2kg
Dimensions (ØxL)	208x900mm
Ballast units (EBU)	4 x
Required generator output	1KW
Optimal deployment height	3500mm
Illumination area	over 700m <sup>2</sup>
Full power	After 2 min

\* System power is dependent on the operating mode

Further information can be found in our product information update 9|5.

**ApolloLED / ApolloLIGHT  
Properties / Accessories**

**Temperature switch with overheating protection**

If the temperature inside the light exceeds the set value, the temperature switch turns the illuminant off while the internal fan continues to run. If the temperature inside the light then falls below a set value, the temperature switch responds automatically. This behaviour is independent of the presence or otherwise of mains voltage.

**Light with filter bag**

The filter bag has been developed especially for use in very dusty environments, particularly where there is coal dust. The Apollo lights are therefore ideal for use in boilers of the kind found in lignite-fired power plants, for example.

**Setup and operation**

In addition to setup on the special stand, the large area lights can also be mounted and operated while hung up. To find the perfect position for a wide range of lighting purposes, it is possible to use a joint on the stand support which can be inclined at 15-degree increments (up to a maximum of 45°).

**Flexible illumination**

In order to avoid dazzling uninvolved people (e.g. on construction sites, on roads and on railway systems), the large-area lights can be switched between the operation of all illuminants and the operation of single-sided lighting:

ApolloLED: Full power 40x10W versus 20x10W of power  
 ApolloLIGHT: Full power 8x80W versus 4x80W of power

Art. No.	Design
286297	ApolloLED2 230V
276356	ApolloLIGHT 230V
276983	ApolloLIGHT 42V
On request	ApolloLIGHT 230V with filter bag

Accessories / spare parts	
266688	Solid crank stand chrome-plated steel Height max. 3.58 m with 3 standing feet
266937	Apollo case
271587	Apollo case for stand
274628	Adapter insert compliant with DIN 14640
267529	Stand joint (inclination up to max. 45°)
268160	Plate foot stand
268011	Carrying bag for stand, including carrying straps
269318	5m connecting cable, 230V
268328	5m connecting cable, 230V, IP68
268834	10m connecting cable, 230V
269320	10m connecting cable, 230V, IP68
268970	5m connecting cable, 42V for ApolloLIGHT
263773	80W illuminant / 840 base for ApolloLIGHT
268997	Guide rope set
277342	Extension of Apollo with filter bag
277343	Spare filter for filter bag

ApolloLED / ApolloLIGHT case Art. No. 266937



Carrying bag for stand Art. No. 268011



Extension with filter bag Art. No. 277342



Stand joint Art. No. 267529



Solid crank stand Art. No. 266688



## Portable work light



PrimaLIGHT work light



PrimaLIGHT work light



MULTI work light



MULTI work light



NovaLIGHT work light



NovaLIGHT work light

Portable work light



ApolloLIGHT - ideal for woodland and tree care



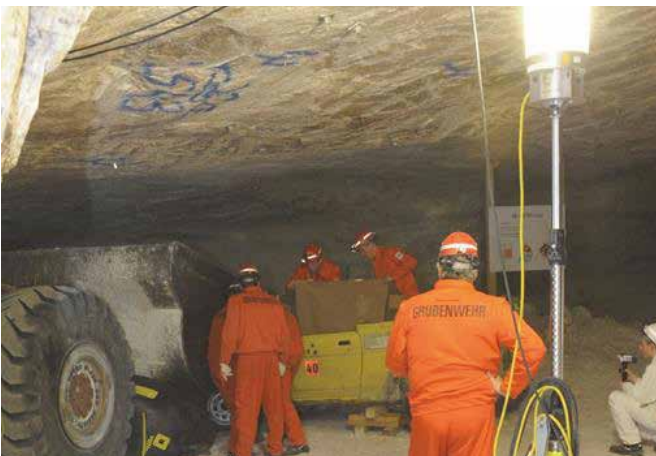
ApolloLIGHT - construction site illumination



ApolloLIGHT - tank illumination



ApolloLIGHT - ideal for use in power stations



ApolloLIGHT - ideal for use underground



ApolloLIGHT - turbine illumination

## LineLED2 LED ceiling light

**NEW**



Mounting clip    Feed-through wiring

The LineLED2 LED ceiling light is extremely sturdy and has a high protection category of IP66. A satin-finish cover minimises the glare effect and keeps the light distribution as even as possible. The mounting clips supplied make installation easier (to cables or screwed directly). Its properties make it especially usable in harsh environments.

### Product characteristics

- Even light distribution
- Low glare effect thanks to satin-finish cover
- Simple cable or direct installation via mounting clip (included in supplied package)
- For installation with feed-through wiring, accessories (installation equipment plug and coupling + sealing cap) are not included in the supplied package
- **5-year warranty!**

### Technical data

Input voltage	100-277 VAC / 50/60 Hz
Light source	LED
System power	40W, 65W
Luminous flux	4200lm, 6825lm
LED efficiency	105lm/W
Light colour	5000K
Beam angle	120°
CRI (colour reproduction index)	> 80R <sub>a</sub>
Service life	> 50,000h
Protection category	IP66 (Feed-through wiring IP65)
Protection class	II
Temperature operation range	-20° C to +40° C
Housing	Aluminium
Cover	Plastic
Impact resistance	IK10
Weight	2.5kg, 3.3kg
Dimensions (LxWxH)	1200x63x83mm 1500x63x83mm

Art. No.	Description
800016	LineLED2 / 40W with 0.5m connecting cable
800018	LineLED2 / 65W with 0.5m connecting cable
287674	LineLED2 DV 40W
287675	LineLED2 DV 65W
288268	LineLED2 DV coupling
288269	LineLED2 DV plug
288270	LineLED2 DV sealing cap

## StreamLIGHT SL70 Protected tube light



GIFAS has completely overhauled its portfolio of protected tube lights. The protection category has been increased up to IP68 and the connection convenience has been massively improved.

Thanks to their high protection category, the SL70 protected tube lights can work without problems or maintenance even under extreme conditions. This standard protected tube lights range has been developed for mounting on or installation in machinery. They are however also suitable for illuminating switching systems and control consoles. Areas of application include wet rooms, tunnels, corners, sewers, water reservoirs, etc.

### Product characteristics

- Fluorescent bulb in rod shape or compact fluorescent bulb
- Light body made from shock-resistant Macrolon or borosilicate glass
- Resistant to chemical and mechanical influences
- Sealing cover made from fibreglass-reinforced nylon 66, dust and water tight
- With feed-through wiring and additional internal cable gland\* as standard

\*On lights that have been equipped with a connecting cable at the factory, the additional cable gland is not provided.

### Technical data

Input voltage	12/24VDC, 24/42/230VAC
Ballast unit	EBU (electronic ballast unit) installed
Light colour	4000K
Protection category	IP68
Protection class	I / III
Temperature operating range	-25 to +45 °C
Housing	Macrolon / borosilicate glass
Weight	approx. 7.0kg
Dimensions Ø	70mm



End cap with two sealing O-rings



End cap with safety cap fitted

**StreamLIGHT SL70**  
**Protected tube light**

Art. No.	Design	Voltage	Power	Length	Illuminant
840047	Borosilicate glass	12VDC	18W	750mm	TC-L compact
840046	Macrolon	12VDC	18W	750mm	TC-L compact
840064	Borosilicate glass	12VDC	36W	925mm	TC-L compact
840056	Macrolon	12VDC	36W	925mm	TC-L compact
840049	Borosilicate glass	24VDC	18W	750mm	TC-L compact
840048	Macrolon	24VDC	18W	750mm	TC-L compact
840067	Borosilicate glass	24VDC	36W	925mm	TC-L compact
840066	Macrolon	24VDC	36W	925mm	TC-L compact
840051	Borosilicate glass	24VAC	18W	750mm	TC-L compact
840050	Macrolon	24VAC	18W	750mm	TC-L compact
840070	Borosilicate glass	24VAC	36W	925mm	TC-L compact
840069	Macrolon	24VAC	36W	925mm	TC-L compact
840055	Borosilicate glass	42VAC	18W	750mm	TC-L compact
840052	Macrolon	42VAC	18W	750mm	TC-L compact
840080	Borosilicate glass	42VAC	36W	925mm	TC-L compact
840079	Macrolon	42VAC	36W	925mm	TC-L compact

Art. No.	Design	Voltage	Power	Length	Illuminant
840005	Borosilicate glass	230VAC	11W	500mm	TC-SEL compact
840004	Macrolon	230VAC	11W	500mm	TC-SEL compact
840007	Borosilicate glass	230VAC	18W	565mm	TC-L compact
840006	Macrolon	230VAC	18W	565mm	TC-L compact
840015	Borosilicate glass	230VAC	18W	925mm	T8 tubes
840014	Macrolon	230VAC	18W	925mm	T8 tubes
840009	Borosilicate glass	230VAC	36W	750mm	TC-L compact
840008	Macrolon	230VAC	36W	750mm	TC-L compact
840017	Borosilicate glass	230VAC	36W	1535mm	T8 tubes
840016	Macrolon	230VAC	36W	1535mm	T8 tubes
840029	Borosilicate glass	230VAC	39W	1175mm	T5 tubes
840028	Macrolon	230VAC	39W	1175mm	T5 tubes
840030	Borosilicate glass	230VAC	49W	1835mm	T5 tubes
840031	Macrolon	230VAC	49W	1875mm	T5 tubes
840033	Borosilicate glass	230VAC	54W	1535mm	T5 tubes
840032	Macrolon	230VAC	54W	1535mm	T5 tubes
840011	Borosilicate glass	230VAC	55W	925mm	TC-L compact
840010	Macrolon	230VAC	55W	925mm	TC-L compact
840019	Borosilicate glass	230VAC	58W	1835mm	T8 tubes
840018	Macrolon	230VAC	58W	1835mm	T8 tubes
840013	Borosilicate glass	230VAC	80W	925mm	TC-L compact
840012	Macrolon	230VAC	80W	925mm	TC-L compact
840035	Borosilicate glass	230VAC	80W	1835mm	T5 tubes
840034	Macrolon	230VAC	80W	1835mm	T5 tubes
840041	Borosilicate glass	230VAC	2x39W	1175mm	T5 tubes
840040	Macrolon	230VAC	2x39W	1175mm	T5 tubes
840045	Borosilicate glass	230VAC	2x54W	1535mm	T5 tubes
840044	Macrolon	230VAC	2x54W	1535mm	T5 tubes

## StreamLED SL50 Protected tube light



## StreamLED Power Protected tube light



The StreamLED SL50 and StreamLED Power represent an economical alternative to conventional protected tube lights. The powerful and energy-efficient LED tubes in the modern design are particularly ideal for workshops, large factories, retail businesses, warehouses, supermarkets, refrigerated warehouses, hospitals, doctors' surgeries, museums, etc. The latest-generation LED tubes give out light energy concentrated at a defined beam angle (120°) unlike conventional fluorescent tubes without any of the annoying flickering.

### Product characteristics

- Low energy consumption with a high light yield
- 40% less heat generation than with fluorescent bulbs
- No starter and no ballast unit required
- Use of ultra-modern, patented LEDs
- Consistent illumination, regardless of external temperature
- Unbreakable (workplace safety)
- Non-dimmable
- With feed-through wiring and additional internal cable gland\* as standard

### Technical data

Input voltage	230VAC
Power supply	Mains connection
Light source	T8 LED tubes
System output	11W / 26W / 32W
Luminous flux	1,200lm / 2,600lm / 3,200lm
Light colour	4000K
Beam angle	120°
Service life	> 40,000h
Protection category	IP68
Protection class	I
Temperature operating range	-25 to +45 °C
Housing	Macrolon
Dimensions Ø	54mm

\*On lights that have been equipped with a connecting cable at the factory, the additional cable gland is not provided.

Art. No.	Design	Voltage	Power	Length
840001	Macrolon	230V	11W	960mm
840002	Macrolon	230V	26W	1570mm
840003	Macrolon	230V	32W	1870mm

### Product characteristics

- Connection via M20 cable gland (for cables with a diameter of 7-14 mm)
- Can be used indoors and outdoors
- Low energy consumption with a high light yield
- Full luminous flux available immediately
- Minimal temperature development
- Consistent illumination, regardless of external temperature
- Degree of protection for mechanical damage where acrylic tubes are used: IK09
- Extremely switching-resistant (> 1 million)
- Maintenance-free
- Impervious to impact and vibration, unbreakable (workplace safety)
- No UV / IR radiation
- With feed-through wiring and additional internal cable gland\* as standard

### Technical data

Input voltage	230VAC
Power supply	Mains connection
Light source	LED strips
System power	11W / 16.8W
Luminous flux	700lm / 1,200lm
Light colour	6500K
Beam angle	120°
Protection category	IP67
Protection class	I
Temperature operating range	-30 to +50 °C
Housing	Acrylic glass
Dimensions Ø	54mm

\*On lights that have been equipped with a connecting cable at the factory, the additional cable gland is not provided.

Art. No.	Design	Voltage	Power	Length
284575	Acrylic glass	230V	11W	660mm
287835	Acrylic glass	230V	16.8W	1080mm

Other designs available upon request.



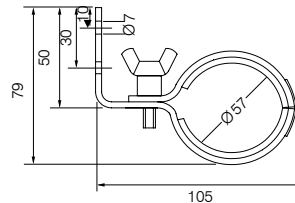
**Protected tube lights  
Accessories**



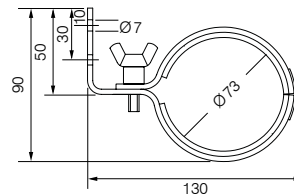
**Accessories / spare parts**

840082	Wall bracket SL50+ SL Power, stainless steel V4A*
840083	Wall bracket SL70 type 1, stainless steel V4A*
840084	Wall bracket SL70 type 2, stainless steel V4A*
840085	Wall bracket SL70 type 3, stainless steel V4A*
237622	TC-SEL compact light source 11W/230V
237615	TC-L compact light source 18W/230V
237617	TC-L compact light source 36W/230V
237618	TC-L compact light source 55W/230V
263773	TC-L compact light source 80W/230V
237231	T8 fluorescent tubes 18W/230V
237613	T8 fluorescent tubes 36W/230V
237614	T8 fluorescent tubes 58W/230V
282301	T5 fluorescent tubes 14W/230V
282302	T5 fluorescent tubes 21W/230V
282303	T5 fluorescent tubes 24W/230V
282304	T5 fluorescent tubes 28W/230V
282305	T5 fluorescent tubes 39W/230V
282306	T5 fluorescent tubes 49W/230V
282307	T5 fluorescent tubes 54W/230V
282308	T5 fluorescent tubes 80W/230V
282986	T8 LED tubes 11W/230V
282309	T8 LED tubes 26W/230V
282310	T8 LED tubes 32W/230V
On request	Cable gland
282491	Installation wrench

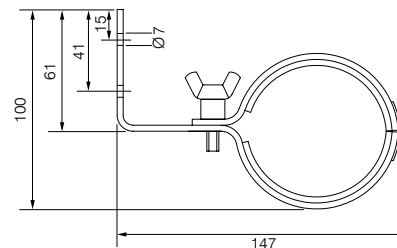
\*2 x per light



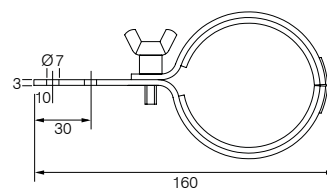
Wall bracket SL50+ SL Power, Art. No. 840082



Wall bracket SL70 type 1, Art. No. 840083



Wall bracket SL70 type 2, Art. No. 840084



Wall bracket SL70 type 3, Art. No. 840085



Further spare / individual parts and protective tube (Macrolon or glass) available on request.

## Protected tube lights



Street lighting



Street sign illumination, industrial zone



Underpass street lighting



Underpass street lighting

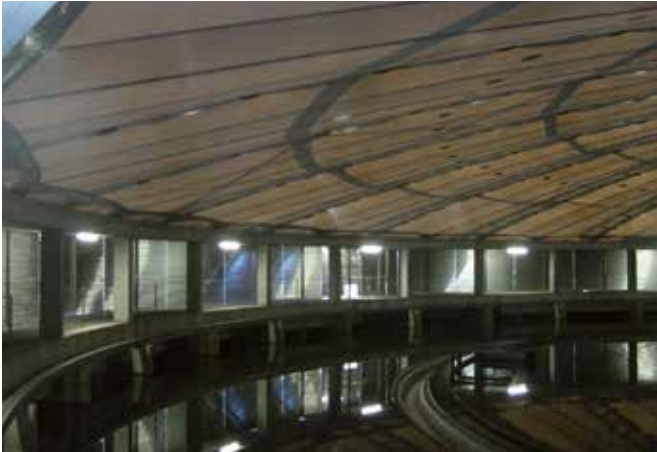


Waterworks street lighting



Waterworks street lighting

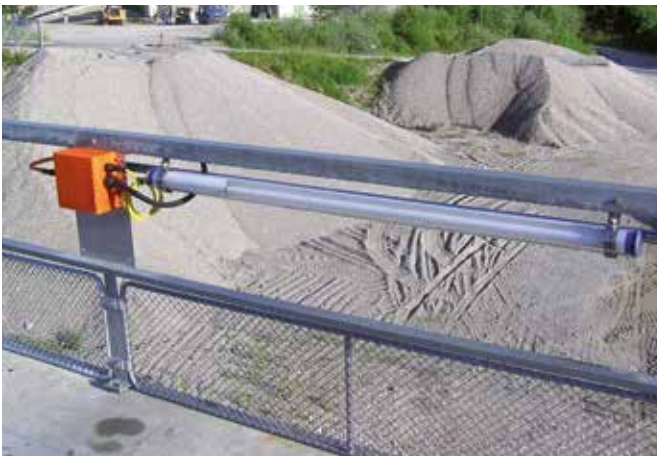
Protected tube lights



Waste water cleaning plant



Workplace illumination, power plant



Street lighting, gravel plant



Machine illumination



Signpost illumination

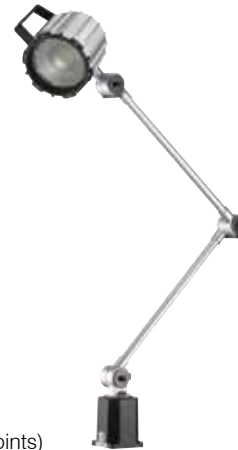


Ice cave illumination

**MasterLED  
Workstation LED light**



Type 1  
(with 1 joint)



Type 3  
(with 3 joints)



Good visibility for safety at work in all situations. The right light source, safe and convenient, provides light on an as-needed basis for every illumination task and offers energy-efficient, long-lasting lighting in commercial situations, industry and applications both indoors and outdoors. The LED workstation light is extremely robust and equipped with shatter-free glass. With its various articulated arms, the MasterLED can rotate and swivel, making it the perfect light for all manner of different uses.

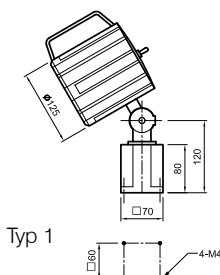
**Product characteristics**

- Full light flux available immediately
- Low energy consumption with a high light yield
- Extremely resilient to switching (> 1 million )
- Insensitive to shock and vibration
- With satin-finish lens
- Can be rotated and swivelled in various positions
- Screw-on lamp base
- On/Off switch on the rear lamp head
- Grip made from polyamide

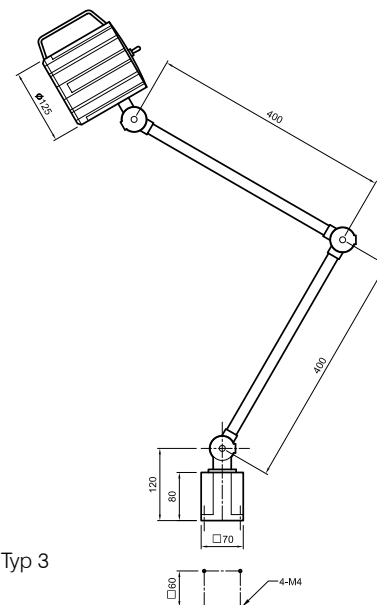
**Technical data**

Input voltage	230VAC, 24VAC/DC
Light source	1x20W LED
Luminous flux	1500lm
Service life	> 50,000h
Protection category	IP65
Protection class	III when operated at safety low voltage
Housing and reflector	Aluminium
Cover	Non-shatter safety glass

Art. No.	Design
283110	Type 1 24VAC/DC
283112	Type 3 24VAC/DC
283113	Type 1 230VAC
283115	Type 3 230VAC
Accessories / spare parts	
284022	Screw-on magnetic foot
236643	Spare switch
236644	Protective cap for switch
274951	Type 3 joint stand
236641	Clear replacement glass
251620	Glare restriction louvre, black plastic
245361	Handle
245728	Screw-on clamp
236645	Sealing ring for front pane
282898	20W LED head
282899	230VAC electronics
282900	24VAC/DC electronics



Typ 1



Typ 3

With connecting cable on request

**SpotLED FLEX**  
Workstation LED spotlight



The SpotLED FLEX work light guarantees excellent visibility in every situation; it is a highly effective, small and compact light source, safe and convenient, providing light on an as-needed basis for every illumination task and offering energy-efficient, long-lasting lighting for the specific workplace thanks to state-of-the-art LED technology.

**Product characteristics**

- Extremely sturdy, can rotate and swivel, vibration-resistant
- Housing with cooling fins for optimised heat dissipation
- Flexible tube and adapter made from steel, black coated
- Clip made from stainless steel V2A, powder-coated
- Can be supplied as a wide or broad beam

**Technical data**

Input voltage		12-30VDC or via mains unit 230VAC, 24VDC (also available in 24VAC on request)
Power supply	24VDC 12VDC	500mA 950mA
Light source		5x3W PowerLEDs
Light colour		6350-7000K
Beam angle		Spot 10° Medium 38°
Protection category		IP54 (without connector power pack)
Protection class		III
Temperature operating range		-30°C to +45°C
Surface temperature:		max. 55°C
Housing		Aluminium die casting, black coated
Weight		500g
Dimensions (WxHxD)		108x67x82mm (light)

Art. No.	Design	Management	Connector power pack	Flexible tube
275211	Spot	-	-	200mm
275214	Spot	-	-	300mm
275215	Spot	-	-	400mm
275595	Spot	-	-	600mm
275216	Medium	-	-	200mm
275217	Medium	-	-	300mm
275218	Medium	-	-	400mm
275596	Medium	-	-	600mm
275516	Spot	1.6m	230V	200mm
275517	Spot	1.6m	230V	300mm
275518	Spot	1.6m	230V	400mm
275718	Spot	1.6m	230V	600mm
275519	Medium	1.6m	230V	200mm
275520	Medium	1.6m	230V	300mm
275522	Medium	1.6m	230V	400mm
275719	Medium	1.6m	230V	600mm

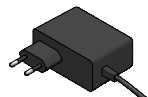
**Accessories**

275540	230VAC/24VDC plug-in power supply with 1.6m, 2x0.5mm <sup>2</sup> (PUR cable) connecting cable
275523	Round magnetic clamp, diameter 86 x 20 mm, force 540 N incl. M6 fastening screw
270923	PC transparent safety glass for SpotLED Flex
270922	Safety grille V2A

**Accessories**



Round magnetic clamp



Plug-in power supply with connecting cable



PC transparent safety glass



Safety grille V2A

Other designs available upon request.

Spot 10° lighting plan

Medium 38° lighting plan

Average illuminance (lx)

Mounting height (m)

Mounting height (m)

1 m ————— 12400 lx

1 m ————— 983 lx

2 m ————— 3000 lx

2 m ————— 245 lx

3 m ————— 1400 lx

3 m ————— 109 lx

4 m ————— 800 lx

4 m ————— 62 lx

5 m ————— 500 lx

5 m ————— 40 lx

## LED laboratory light



This linear object lighting is ideal for illuminating workstations. The flat design means that the LED laboratory light fits into its surroundings perfectly. The LED modules are energy-efficient and have a long service life.

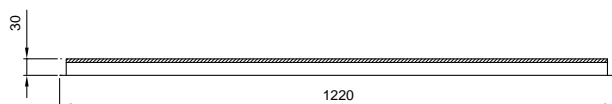
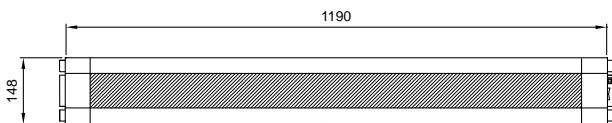
### Product characteristics

- High light yield
- Various attachment and under-mounting options available
- Extra-flat design

### Technical data

Input voltage	230VAC / 50Hz
Light source	3 LED modules on EBU
System power	40W at cos(phi) 0.84
Luminous flux	1020 Lux at 1m
Protection class	I, protective earth, incl. potential equalisation
Protection category	IP54
Weight	2.5kg
Dimensions (WxHxD))	1220(1190)x148x30mm

Art. No.	Design
278593	LED laboratory light 230VAC



Workstation lights



MasterLED - lathe workplace illumination



MasterLED - lathe workplace illumination



SpotLED FLEX - aluminium press illumination



SpotLED FLEX - aluminium press illumination



LED laboratory light - workplace illumination



LED laboratory light - workplace illumination

## AlphaLUXX LED spotlight

**NEW** 100% Made in Germany  
DESIGNED, DEVELOPED and PRODUCED by GIFAS



AlphaLUXX  
With external power  
pack



AlphaLUXX AC  
Without external power  
pack

### Basic product characteristics

- Dirt-repellent PTFE surface coating, approved for the food industry
- Customised, long-lasting head conduction foil for constant, reliable heat dissipation from the LED PCB
- Low heat development thanks to state-of-the-art LED technology
- Pressure equalisation element for extreme temperature fluctuations
- Full luminous flux available immediately after switch-on
- Low energy consumption with a high light yield
- Maintenance-free, insensitive to vibration
- No UV / IR radiation
- **5-year warranty!**

### Technical data for AlphaLUXX

Input voltage	100-277VAC (50/60Hz)
Light source	SMD-LEDs
System power	128W / 111W / 86W
Luminous flux	18636lm / 16432lm / 12801lm
LED efficiency	158lm/W / 162lm/W / 167lm/W
System efficiency	146lm/W / 149lm/W / 149lm/W
Light colour	5000K
Beam angle	120°
CRI (colour reproduction index)	> 80Ra
Service life	[L70/B10] > 80000h
Protection category	IP65
Protection class	I
Shock resistance	IK10 (for the design with PC cover)
Dimming	optional 1~10V (DALI with add-on module)
Temperature of operating zone	120W -30°C to +50°C 100W -30°C to +55°C 80W -30°C to +60°C
Max. surface temperature	+90°C (suitable for use in workshops at risk of fire), D labelling
Housing	Aluminium die casting, alloy 230D
Housing surface	PTFE-coated (approved for the food industry)
Housing colour	Black (optional, with powder coating, different choice of colour possible)
Cover	5mm ESG (single-pane safety glass) (versions in clear or satin finish) optional 5mm PC clear
Weight	approx. 7.0kg
Dimensions (LxWxH)	389x252x106.5mm
Certifications	ENEC, CE, IK10 (suitable for the food industry)

### Product characteristics AlphaLUXX

- With external power pack
- Excellent efficiency from up to 167 Lumen per Watt
- Also available in dimmable design

### Product characteristics AlphaLUXX AC

- without external power pack
- No separate operating unit (e.g. AC/DC power pack) required
- Increased protection category IP66
- **5-year warranty!**

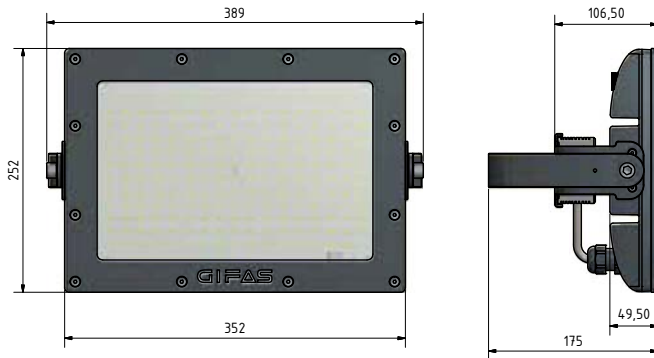
### Technical data for AlphaLUXX AC

Input voltage	200-240VAC (50/60Hz)
Light source	SMD-LEDs
System power	119W / 101W / 83W
Luminous flux	12921lm / 11141lm / 9259lm
LED efficiency	113lm/W / 116lm/W / 120lm/W
System efficiency	109lm/W / 110lm/W / 112lm/W
Light colour	5000K
Beam angle	120°
CRI (colour reproduction index)	> 80 Ra
Service life	[L70/B10] > 80000h
Protection category	IP66
Protection class	I
Shock resistance	IK10 (for the design with PC cover)
Temperature of operating zone	120W -30°C to +50°C 100W -30°C to +55°C 80W -30°C to +60°C
Max. surface temperature	+90°C (suitable for use in workshops at risk of fire), D labelling
Housing	Aluminium die casting, alloy 230D
Housing surface	PTFE-coated (approved for the food industry)
Housing colour	Black (optional, with powder coating, different choice of colour possible)
Cover	5mm ESG (single-pane safety glass) (versions in clear or satin finish) optional 5mm PC clear
Weight	approx. 5.5kg
Dimensions (LxWxH)	389x252x49.5mm
Certifications	ENEC, CE, IK10 (suitable for the food industry)

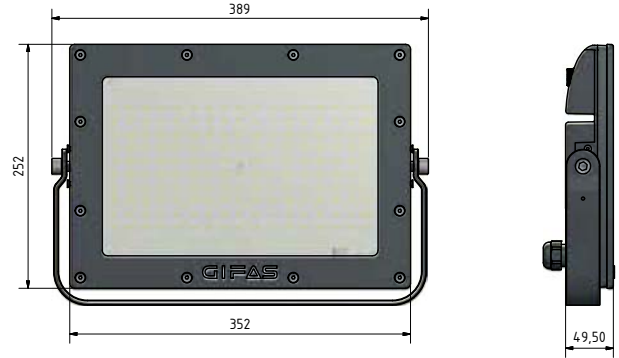


**AlphaLUXX**  
Light diagrams / designs

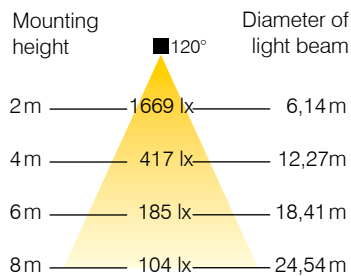
AlphaLUXX dimensions



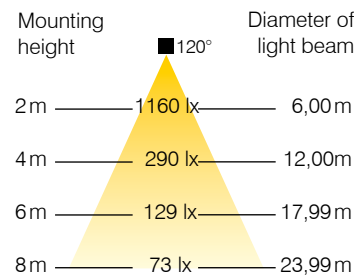
AlphaLUXX AC dimensions



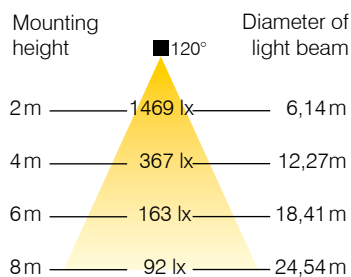
AlphaLUXX 120W light diagram



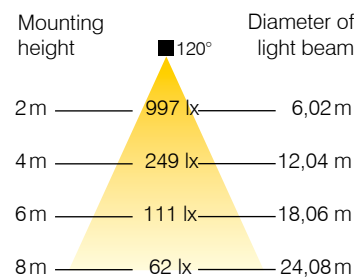
AlphaLUXX-AC 120W light diagram



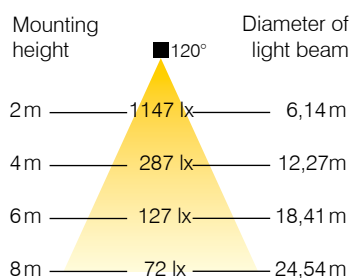
AlphaLUXX 100W light diagram



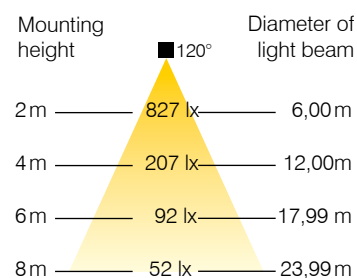
AlphaLUXX-AC 100W light diagram



AlphaLUXX 80W light diagram



AlphaLUXX-AC 80W light diagram



Art. No.	Design
800043	AlphaLUXX/W120V230
800048	AlphaLUXX/W100V230
800049	AlphaLUXX/W80V230
800052	AlphaLUXX/W120V230/DIMM (1-10V dimmable)

Art. No.	Design
800044	AlphaLUXX-AC/W120V230
800050	AlphaLUXX-AC/W100V230
800051	AlphaLUXX-AC/W80V230

Further information can be found in our product information update 9 | 13.

## FlutLED2 LED spotlight

**NEW**



With the optimised LED flood light series FlutLED2, GIFAS offers you a lighting system suitable for a variety of applications.

Thanks to the high-quality die-cast aluminium cooling element and long-lasting, powder-coated surface treatment, the spot lights are extremely robust.

The FlutLED2 spotlight is ideal for all areas that require extensive basic illumination. The spotlights are equipped with a holding bracket which allows them to be mounted on the wall, ceiling or floor.

These LED spotlights give you bright light and at the same time cut your energy costs. **With 5-year warranty!**

### Technical data

Input voltage	85~265VAC (50/60 Hz)
Light source	LED
System power	27W / 52W / 71W / 114W
Luminous flux	2315lm / 4543lm / 6328lm / 10940lm
System efficiency	120lm/W
Light colour	5700K
Beam angle	120°
CRI (colour reproduction index)	> 80 R <sub>a</sub>
Service life	> 50,000h
Protection category	IP66
Protection class	I
Temperature of operating zone	-20°C to +45°C
Housing	Die-cast aluminium
Housing surface	powder-coated
Housing colour	Black
Cover	ESG (single-pane safety glass) matt
Weight	1.9kg / 3.5kg / 4.8kg / 7.3kg
Dimensions (LxWxH)	220x170x45 / 290x225x55 372x250x75 / 400x340x90 mm

### Product characteristics

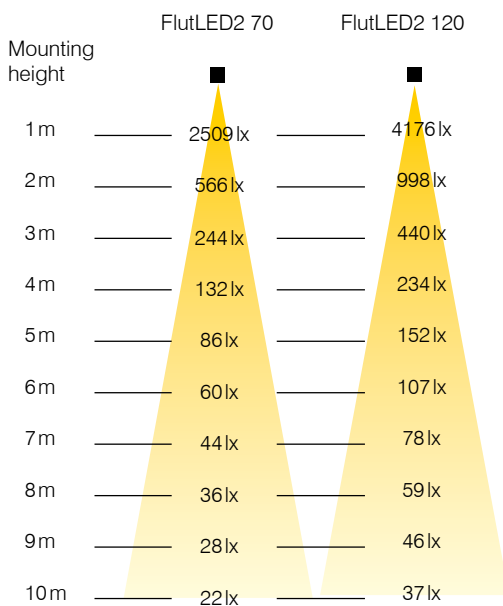
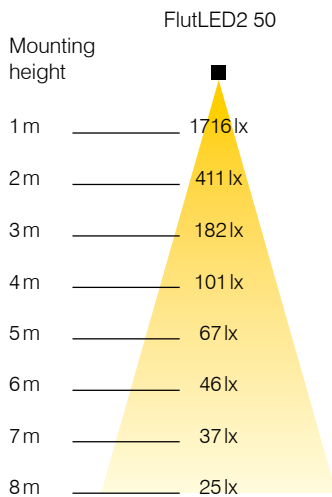
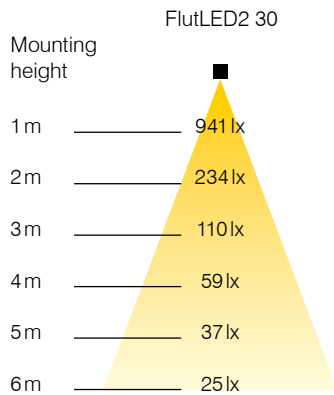
- Full luminous flux available immediately
- Low energy consumption with a high light yield
- Minimal temperature development
- 50,000 hours of operation
- High-quality die-cast aluminium
- Robust and rust-free frame (stand or ceiling mounting)
- Impact-resistant cover
- High energy efficiency
- Maintenance-free
- No UV / IR radiation
- Insensitive to shock and vibration
- D labelling as per VDE 0711-2-24 or EN 60598-2-24

Art. No.	Design
800042	FlutLED2 120 with 5m connecting cable and protective contact plug
800039	FlutLED2 30 with 5m connecting cable and protective contact plug
800040	FlutLED2 50 with 5m connecting cable and protective contact plug
800041	FlutLED2 70 with 5m connecting cable and protective contact plug

### Accessories

278053	Frame for FlutLED2 30 incl. fastening material
278023	Frame for FlutLED2 50 incl. fastening material

Light diagrams



**FlutLED 30W / 50W low-voltage 42V LED spotlight**



Good visibility for safety at work in all situations. The right light source, safe and convenient, provides light on an as-needed basis for every illumination task and offers energy-efficient, long-lasting lighting in commercial situations, industry and applications both indoors and outdoors.

**Product characteristics**

- Full light flux available immediately
- Low energy consumption with a high light yield
- Minimal temperature development
- Extremely switching-resistant (> 1 million)
- Maintenance-free, insensitive to shock and vibration
- No UV / IR radiation

**Technical data**

Input voltage	42VAC
Light source	LED
System power	30W / 50W
System efficiency	>80lm/W
Light colour	5500K
Service life	>50,000h
Protection category	IP65
Protection class	III
Temperature of operating range	-40°C to +55°C
Housing	Aluminium
Housing colour	Silver-grey
Cover	5mm safety glass
Weight	2.3kg / 3.3kg
Dimensions (LxWxH)	30W 225x185x125mm 50W 290x236x153mm

Art. No.	Design	Supply cable	Plug
270617	42V/30W LED	-	-
271089	42V/30W LED	5m	CEE 42V/2P
271090	42V/30W LED	10m	CEE 42V/2P
270616	42V/50W LED	-	-
271080	42V/50W LED	5m	CEE 42V/2P
270641	42V/50W LED	10m	CEE 42V/2P

**Accessories**

278053	Frame for FlutLED 30W incl. fastening material
278023	Frame for FlutLED 50W incl. fastening material
275245	Special clip for stand mounting for FlutLED 30W*
275241	Special clip for stand mounting for FlutLED 50 W*

\*Special clip for wider swivel range of the lights when used with stands

## SpotLED 24 LED spotlight



with fixed connection  
Cable 3x0.5mm<sup>2</sup>, length 5m

The powerful and energy-efficient SpotLEDspotlights with state-of-the-art LED technology offer extensive usage options for outdoor and indoor lighting. The housing material (cast aluminium) can be combined individually with other components (LED, lenses, colours) and can be used for a variety of lighting purposes.

The spotlight has a maximum swivel angle of 165°. The SpotLED is supplied as standard with a clip which can be used for wall mounting. Whether it be outdoors on transport or working vehicles (construction, agriculture, cleaning, waste disposal, snow equipment) or in gardens and on façades, the SpotLED casts everything in a favourable light. Indoors too, there are a wealth of possible uses in rooms and workstations.

### Product characteristics

- Vibration-resistant
- Housing with cooling fins for optimised heat dissipation
- Housing available in white, silver-grey, black
- Clip made from stainless steel V2A, powder-coated
- Various beam angles available (different lenses)
- Connection via potentiometer possible for brightness adjustment (500kOhm, positive logarithm)

### Technical data

Input voltage	12-30VDC or 24VDC via 230VAC power supply unit
Power supply	24VDC 500mA 12VDC 950mA
Light source	5x3W Power LEDs
Light colour	6350 - 7000K 2800 - 3200K Alternative colour filter red/green/yellow
Beam angle	Spot 10° Medium 38° Wide 67°
Protection category	IP66
Protection class	III
Temperature operating range	-10°C to +45°C
Surface temperature	max. 55°C
Housing	Die-cast aluminium
Weight	350g
Dimensions (WxHxD)	108x67x82mm

Other designs available upon request.

Connecting socket Art. No.	Fixed connection 5m Art. No.	Design	Housing colour	Light colour in K
268315	267779	Spot	white	cool white
268309	267780	Spot	silver-grey	cool white
268312	267781	Spot	black	cool white
268308	267966	Medium	silver-grey	cool white
268314	267964	Medium	white	cool white
268311	267967	Medium	black	cool white
281928	281922	Wide	black	cool white
281929	281923	Wide	silver-grey	cool white
281930	281924	Wide	white	cool white
270954	270955	Spot	black	warm white
270950	270951	Spot	white	warm white
270952	270953	Spot	silver-grey	warm white
270934	270935	Medium	silver-grey	warm white
270930	270933	Medium	white	warm white
270936	270937	Medium	black	warm white
281931	281925	Wide	black	warm white
281932	281926	Wide	silver-grey	warm white
281933	281927	Wide	white	warm white

24VDC voltage supply, direct connection  
or via 230V power pack

Accessories	
270922	Safety grille V2A
270923	PC transparent safety glass
268167	Colour filter set: 3 colour filter attachments in red, green and yellow
278055	Earth spike
268322	Plug for cigarette light, 5m cable, for junction box design
267963	Connector power pack for junction box design
On request	3 x 0.5mm <sup>2</sup> control cable, without PE, numbered, diameter 5.2mm
On request	Straight flange socket for junction box 3P, IP67 with 0.2m wire
268321	Connector with 5 m cable for design with junction box
270489	Magnetic clamp, force 180N
267765	Star grip
267829	Power pack 1-phase 1.1 A / 25W, 230 / 24 VDC
267828	Power pack 1-phase 2.2 A / 50W, 230 / 24 VDC

**SpotLED 24  
LED spotlight**



with built-in  
junction box

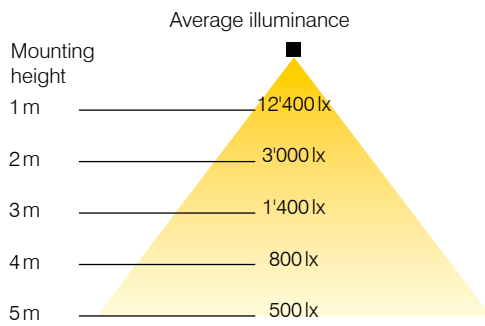
Safety grille V2A Art. No. 270922  
PC transparent safety glass for SpotLED Art. No. 270923



Colour filter attachments, set of 3, green, red, yellow Art. No. 268167



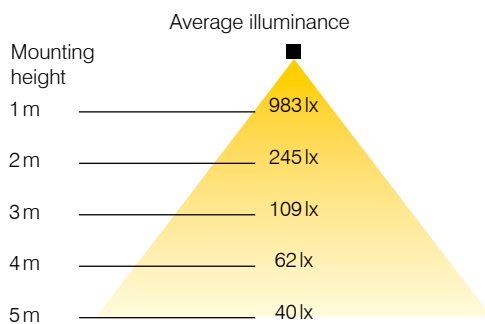
**Spot 10° lighting plan**



Earth spike for SpotLED Art. No. 278055



**Medium 38° lighting plan**



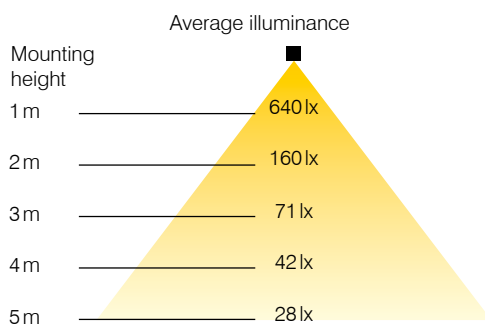
12 VDC charging cable with 5m cable 2 x 0.5mm<sup>2</sup>, socket angled for cigarette lighter Art. No. 268322  
230/24 VDC plug-in power supply with 1.8m cable and angled coupling for rated power of max. 24 W Art. No. 267963



3 x 0.5mm<sup>2</sup> control cable, without PE, numbered, diameter 5.2mm Art. No. on request  
Straight flange socket for junction box 3P, IP67, with 0.2m wire Art. No. on request



**Wide 67° lighting plan**



Connecting cable 5m black, angled with socket 3P, IP67, 3 x 0.25mm<sup>2</sup> Art. No. 268321



## SpotLED 230 LED spotlight



with standing clip

Whether it be homes or advertising spaces, the SpotLED 230 put the spotlight superbly on your property. The SpotLED 230 requires less than 30 Watt to bathe its surroundings in gleaming light. This incredible efficiency is made possible through the use of 8 Power LEDs as the illuminant. The LED spotlight is mounted in a stable clip. It can be swivelled and secured in place with 2 screws. These spotlights are also ideal in combination with movement sensors. The large cooling fins on the back of the spotlight ensure optimum cooling.

### Product characteristics

- Housing made from die-cast aluminium with cooling fins
- Housing colour silver-grey
- Optimised heat dissipation
- Overheating protection
- Mounting clip made from stainless steel, powder-coated, pivotable

### Technical data

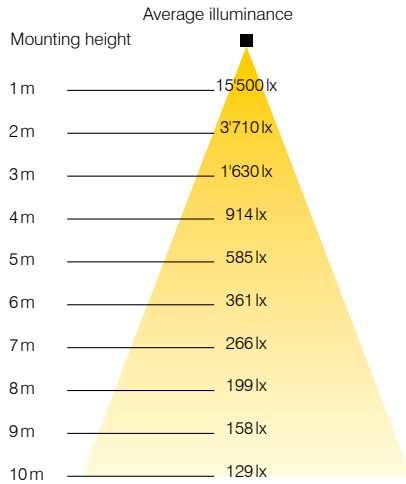
Input voltage	230VAC
Power supply	120mA
Light source	8x3W Power LEDs
Light colour	2800-3300K 3700-4300K 5700-7000K
Beam angle	Spot 10° Medium 38° Wide 67°
Protection category	IP66
Protection class	I
Temperature operating range	-10°C to +45°C
Housing	Die-cast aluminium
Surface temperature	< 50°C
Weight	1000g
Dimensions (WxHxD)	170x89x105mm

Art. No.	Design	Light colour	Cable gland/dummy plug
860200	Spot	warm white	M16/1x
860201	Medium	warm white	M16/1x
860202	Wide	warm white	M16/1x
860206	Spot	comfort white	M16/1x
860203	Medium	comfort white	M16/1x
860207	Wide	comfort white	M16/1x
860204	Spot	cool white	M16/1x
860205	Medium	cool white	M16/1x
860186	Wide	cool white	M16/1x
Accessories			
273854	Compl. standing clip incl. 2 wing screws, 2 spacers and 6 clip protectors		
273855	M5 x 25 mm wing screw (2 x required)		
273856	Clip protector (6 x required)		
278055	Earth spike		

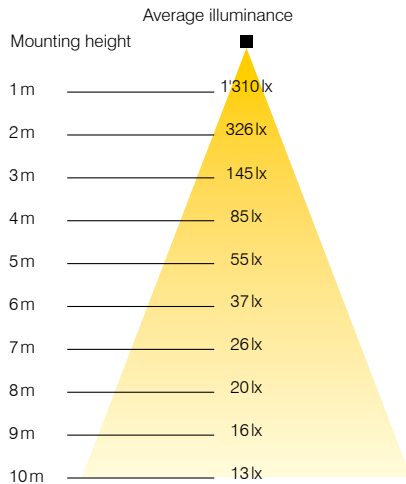
With connecting cable on request.

**SpotLED 230  
LED spotlight**

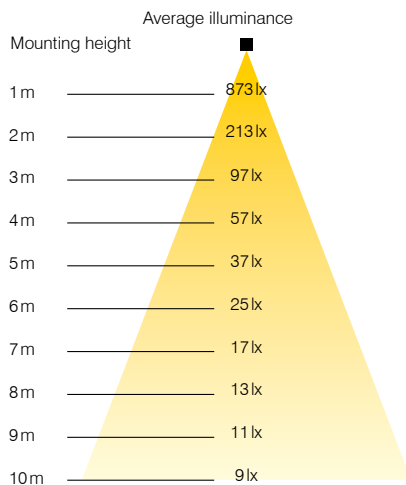
Spot10° lighting plan



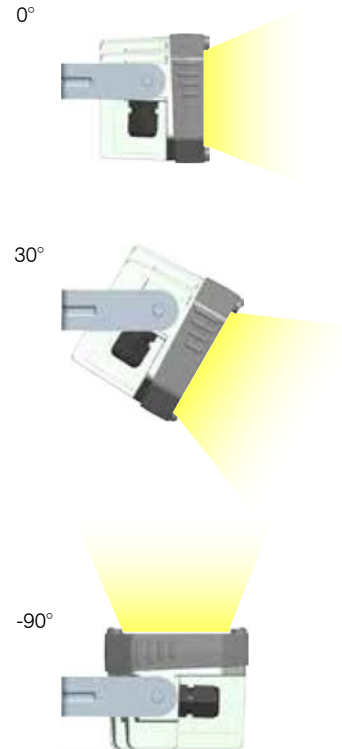
Medium 38° lighting plan



Wide 67° lighting plan



Variable positions from 0° to 90° with fixed mounting



Clip guard, Art. No. 273856



Earth spike Art. No. 278055



## SpotLED



Company sign illumination



In use at a corrugated cardboard factory



In use on a film laminating machine



In use on a hot steel moulding machine, automotive supplier industry



Excavator lighting



Machine lighting



FlutLED



Illumination of equipment rooms, company fire brigade



Hangar lighting



In use in a sandblasting cabin



In use in a quartz sand bunker



Warehouse lighting



Machine lighting

## FlutLED



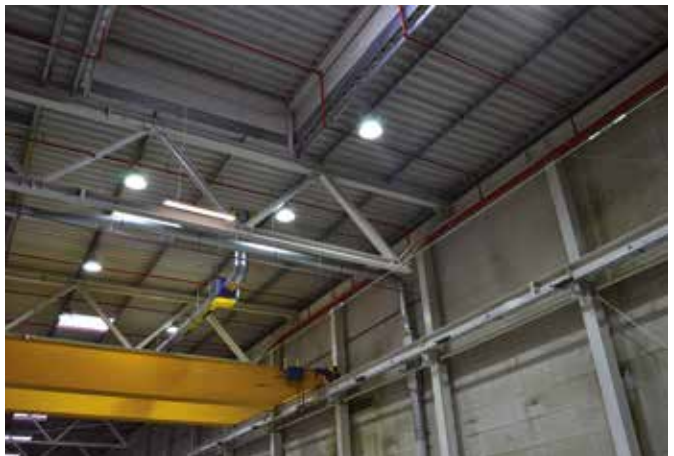
Machine lighting in sanding product plants



Mechanical engineering



Warehouse lighting



Preparation hall for forklift trucks



Corrosion protection industry



Automotive supply industry



CONTACT US TODAY

New products and specialist solutions, along with the latest product catalogue, can be found on our website:

[www.gifas.de](http://www.gifas.de)



**GIFAS**  
ELECTRIC

GIFAS ELECTRIC GmbH  
Borsigstrasse 9  
41469 Neuss  
GERMANY

Phone +49 2137 105-0  
Fax: +49 2137 105-230  
[verkauf@gifas.de](mailto:verkauf@gifas.de)  
[www.gifas.de](http://www.gifas.de)

Technical modifications reserved 11/2016